



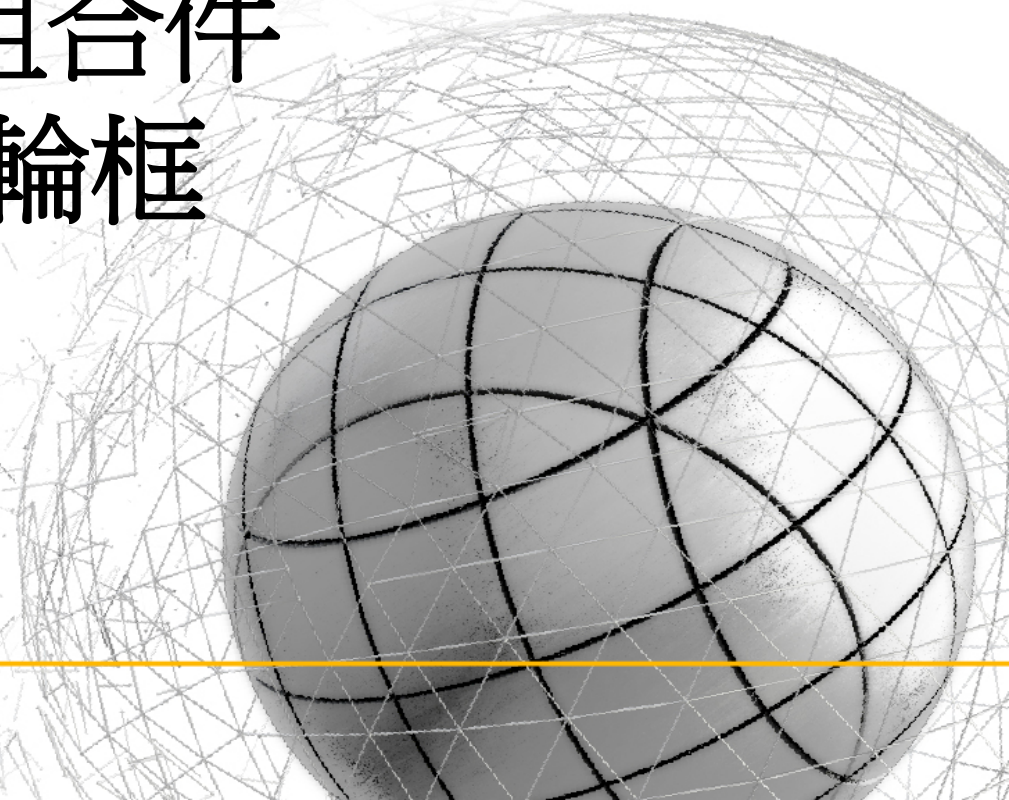
MIDAS

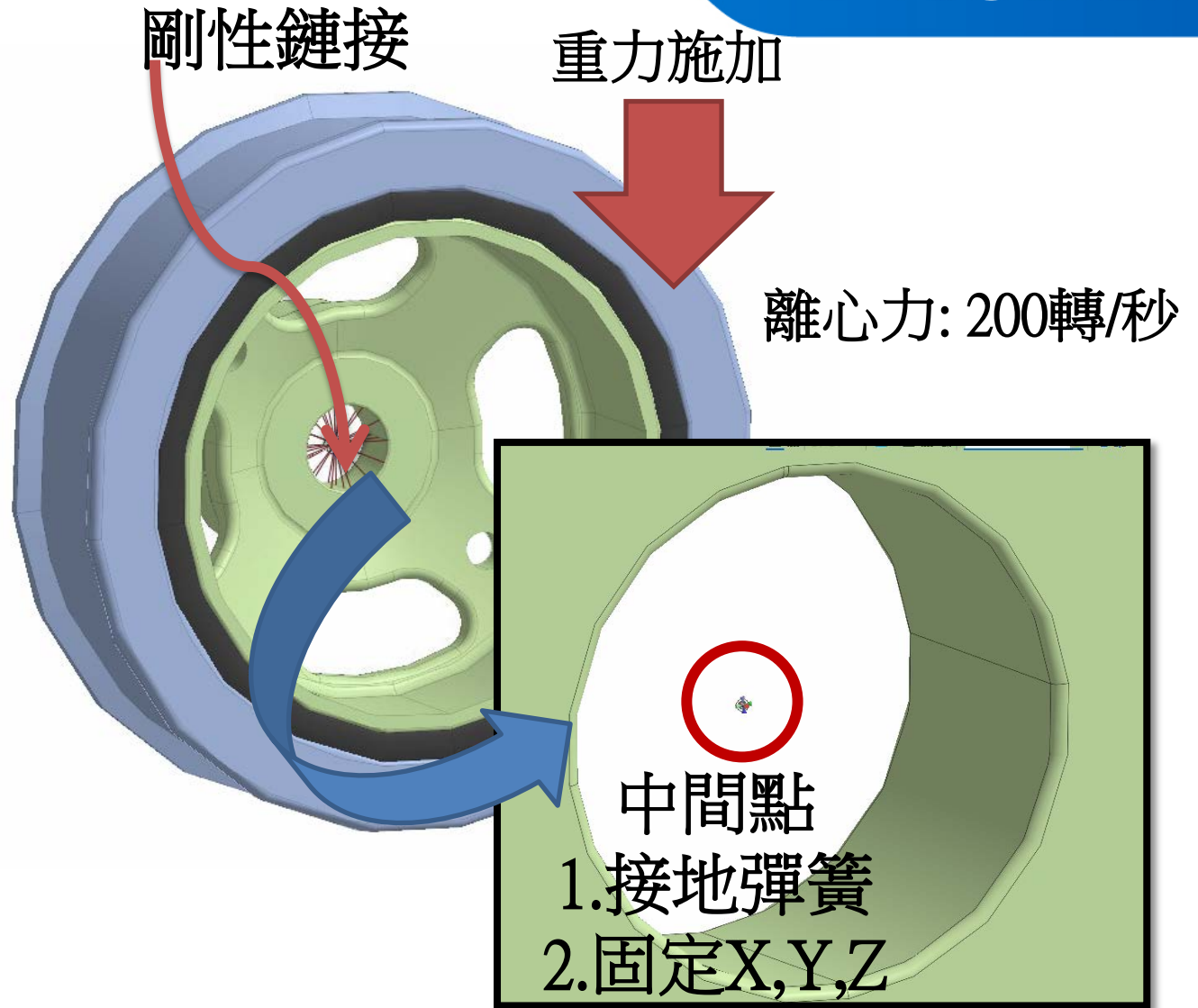
MESH FREE

線性-組合件

EX2.輪框

Simple, but Everything.



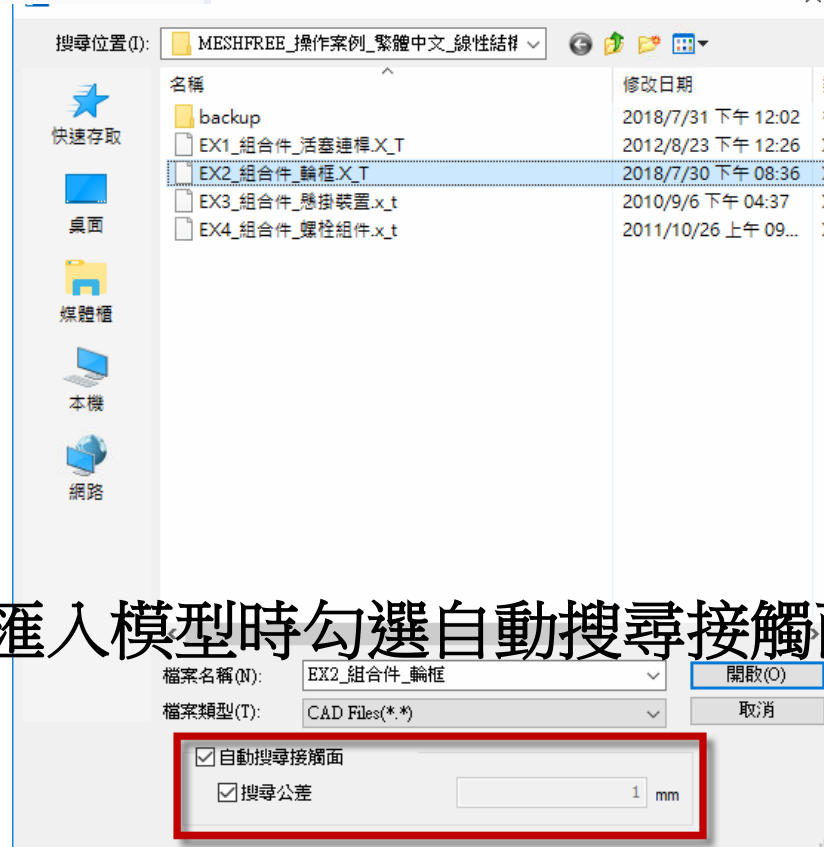


材料: AL6061

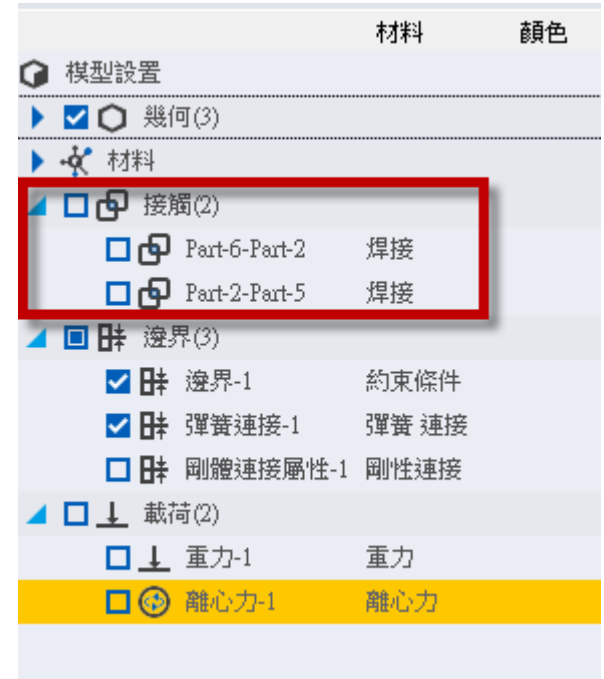
自動搜尋接觸面



Step2.模型樹-列出接觸對



Step1.匯入模型時勾選自動搜尋接觸面



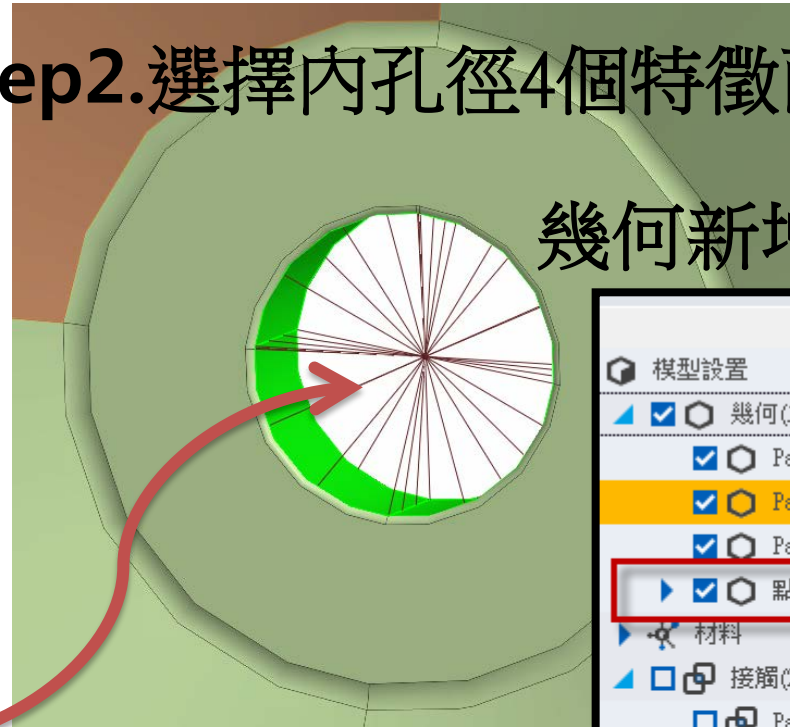
註:自動搜尋接觸面,預設為焊接接觸



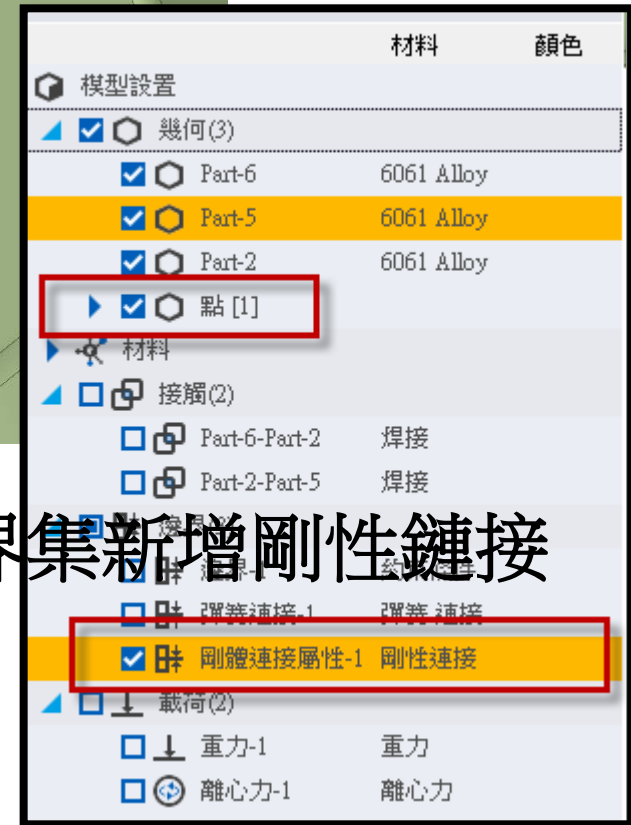
Step1. 採用面定義



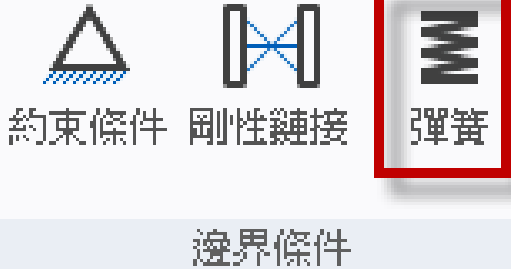
Step2. 選擇內孔徑4個特徵面



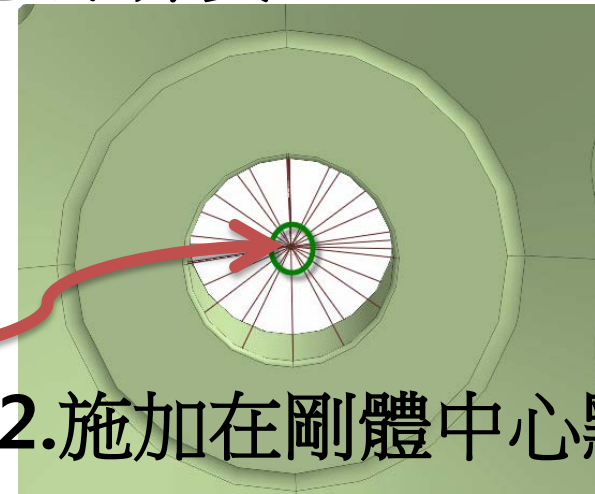
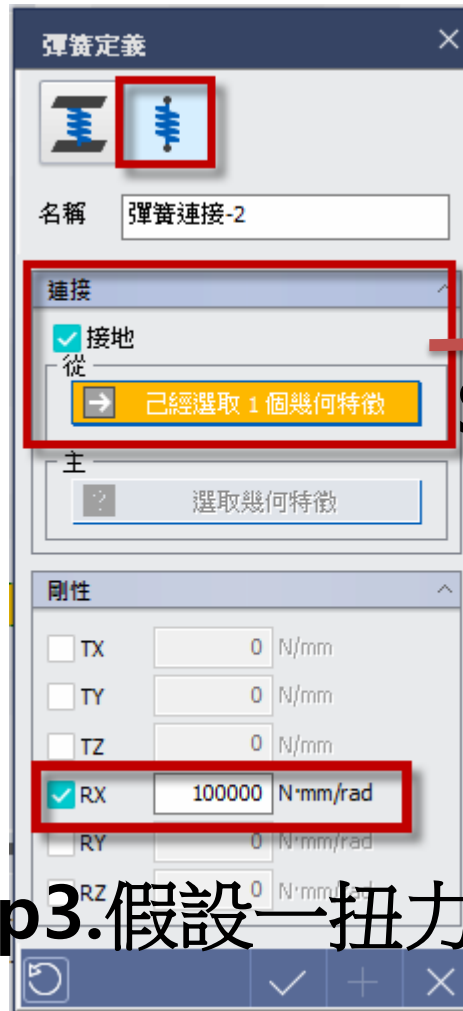
幾何新增一特徵點



邊界集新增剛性鏈接



Step1.使用接地-點彈簧



Step2.施加在剛體中心點

Step3.假設一扭力剛度1000000N-mm/Rad



Step1. 使用點拘束





重力 [X]

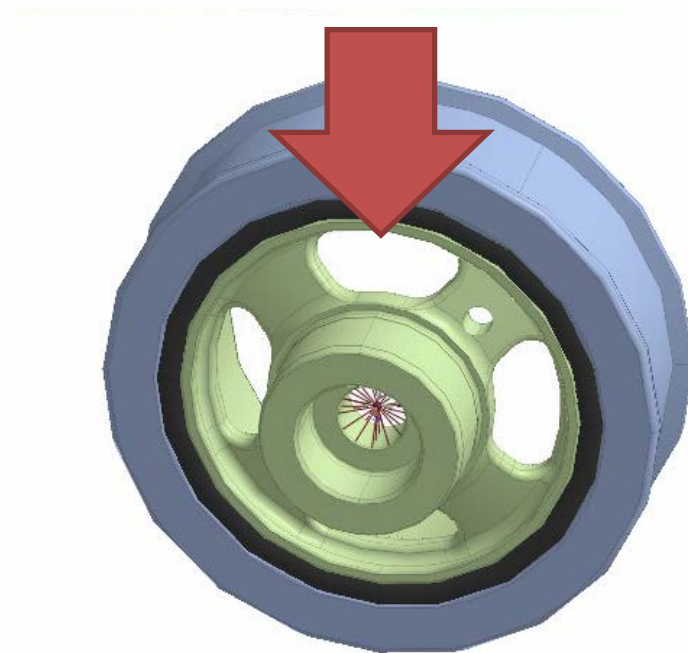
名稱

比例因子 ^

Gx	<input type="text" value="0"/>	mm/sec ²
Gy	<input type="text" value="0"/>	mm/sec ²
Gz	<input type="text" value="-9806"/>	mm/sec ²

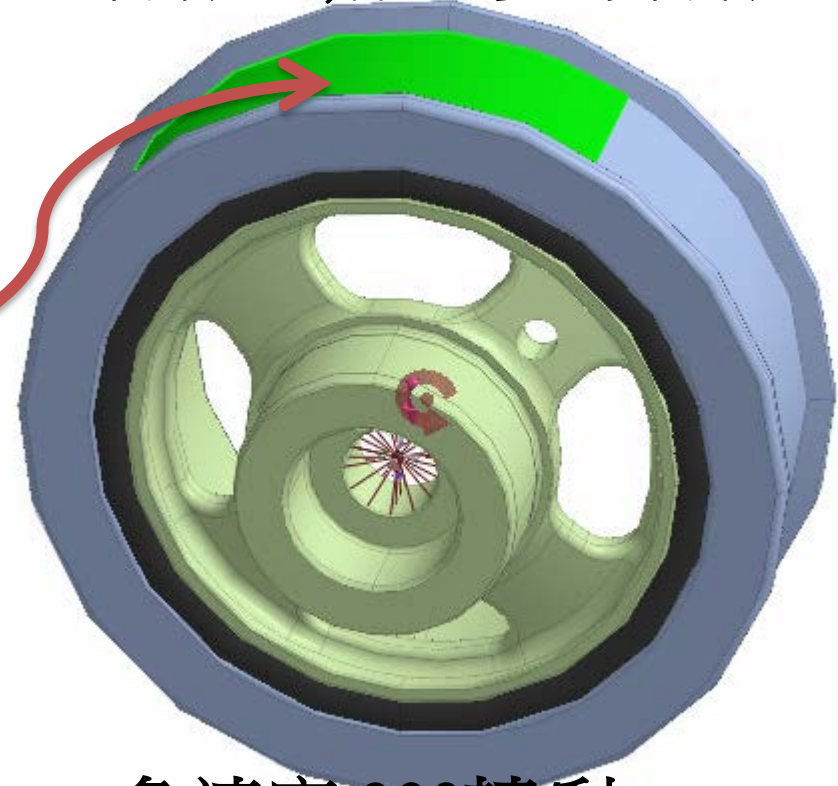
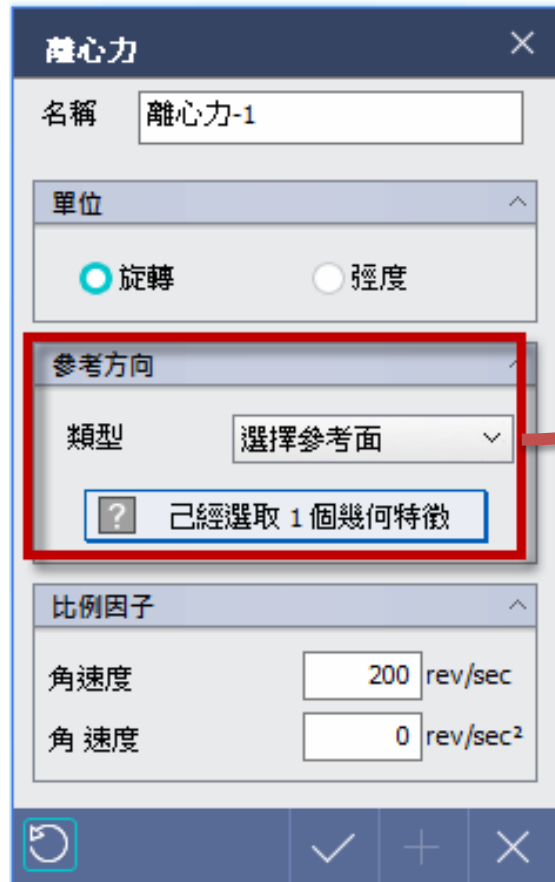
[Refresh] [OK] [Add] [Cancel]

重力方向(預設z方向)





選手一特徵面,作為參考特徵



角速度:200轉/秒

執行分析



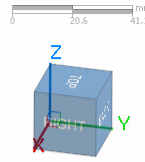
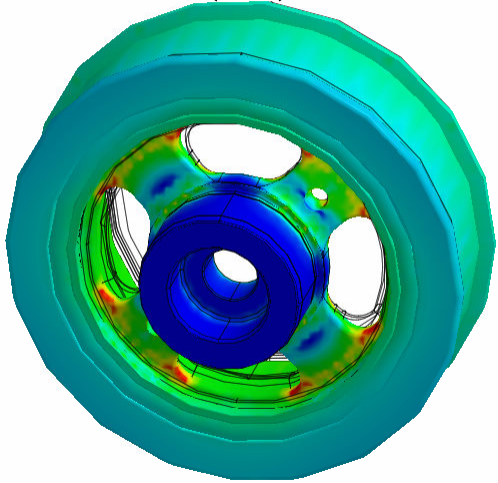
The screenshot displays the MIDAS MeshFree software interface. A central dialog box titled "求解程序 [1/1]" (Solve Program [1/1]) is overlaid on the main workspace. The dialog features a progress indicator showing 57% completion. A list of tasks is shown with checkboxes:

- 自動網點計算 (Automatic Mesh Node Calculation)
- 網點創建 (Mesh Node Creation)
- 接觸搜索 (Contact Search)
- 設置 (Settings)
- 系統矩陣計算 (System Matrix Calculation)
- 求解 (Solve)
- 分析結果 (Analysis Results)

At the bottom of the dialog is a "取消" (Cancel) button. The background interface shows a 3D model of a mechanical assembly with various boundary conditions and material properties defined. The status bar at the bottom indicates the number of DOFs (290484) and equations (290478).

分析類型 線性分析-1
 結果 Von Mises應變

應變(%)



應變

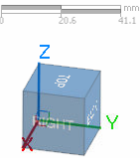
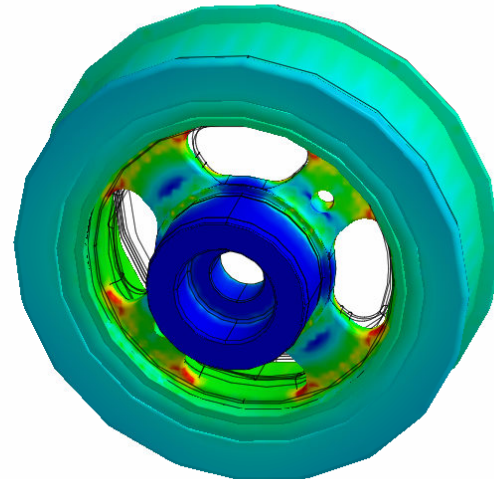
VON MISES應變

1.1%	+5.38914e-004
0.3%	+4.94097e-004
0.4%	+4.49280e-004
0.6%	+4.04464e-004
1.3%	+3.59647e-004
4.8%	+3.14830e-004
18.5%	+2.70014e-004
34.0%	+2.25197e-004
22.9%	+1.80381e-004
6.0%	+1.35564e-004
3.6%	+9.07473e-005
6.5%	+4.59307e-005
	+1.11403e-006

線性分析-1
 Linear Static
 Unit : None

應力(MPa)

分析類型 線性分析-1
 結果 Von Mises應力



應力

VON MISES應力

1.1%	+4.19380e+001
0.3%	+3.84504e+001
0.4%	+3.49628e+001
0.6%	+3.14752e+001
1.3%	+2.79876e+001
4.8%	+2.45000e+001
18.5%	+2.10124e+001
34.0%	+1.75247e+001
22.9%	+1.40371e+001
6.0%	+1.05495e+001
3.6%	+7.06191e+000
6.5%	+3.57430e+000
	+8.66936e-002

線性分析-1
 Linear Static
 Unit : N/mm²