

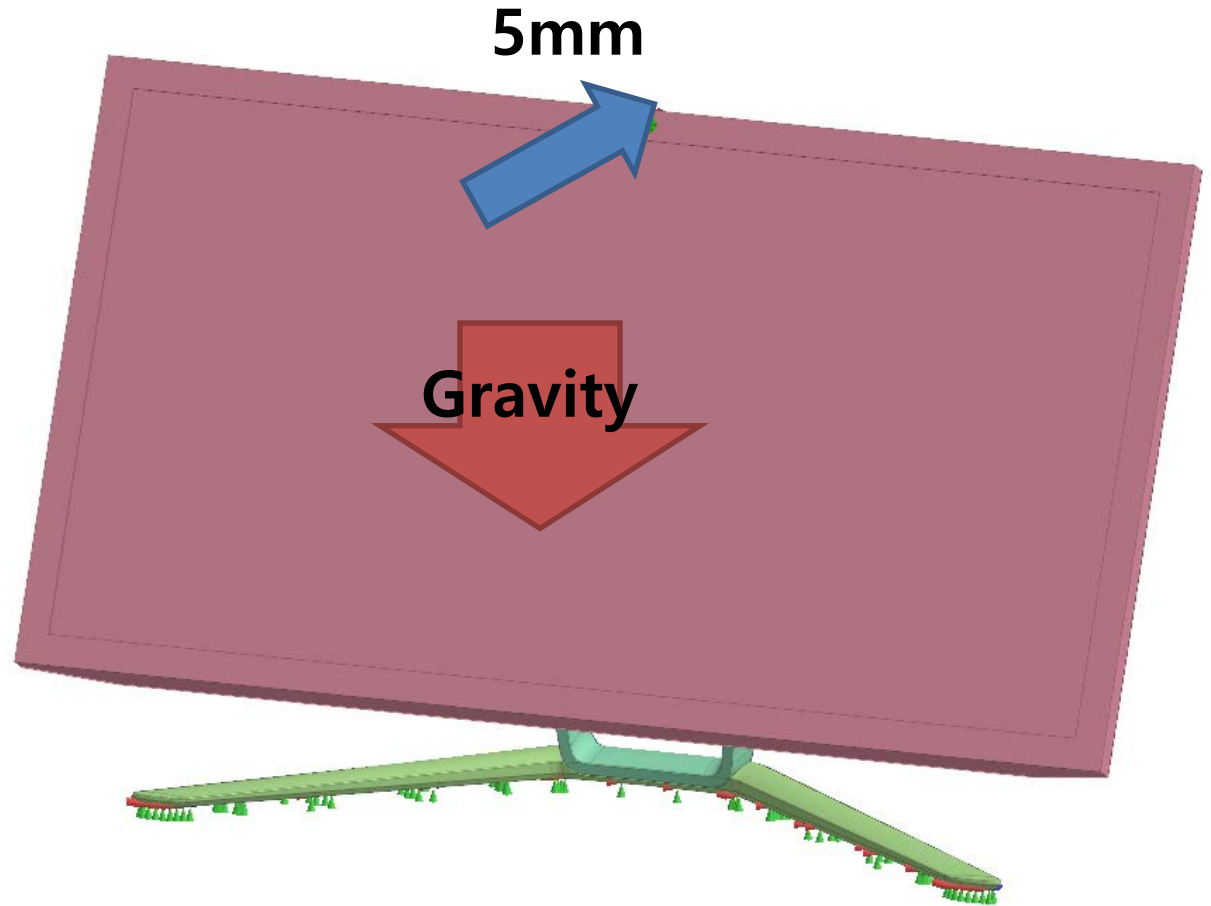


MIDAS

MESH FREE

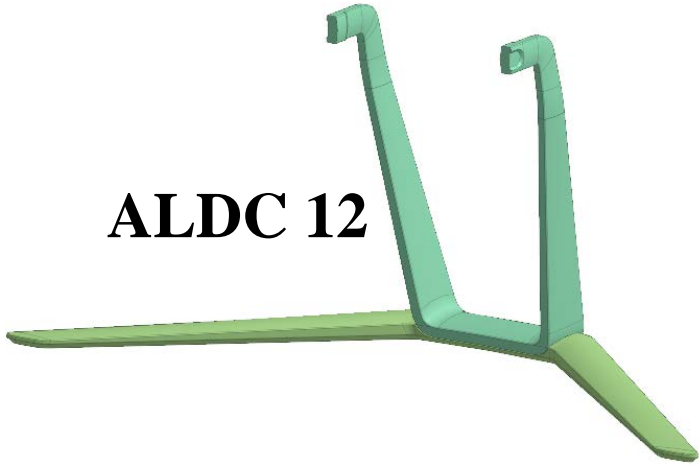
螢幕支撐架_非線性分析 (強制位移量計算反力)

Simple, but Everything.

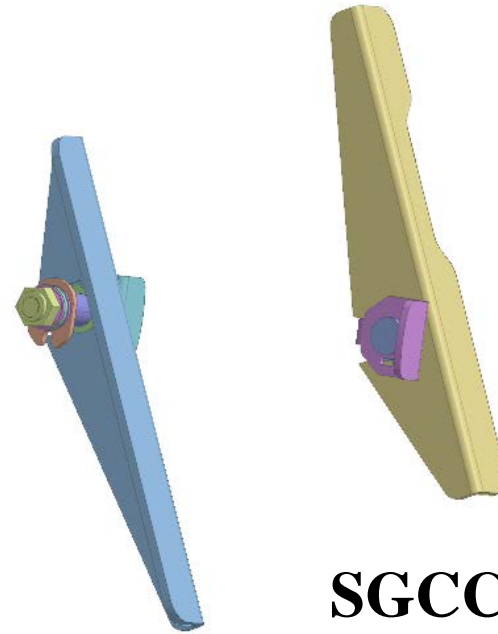
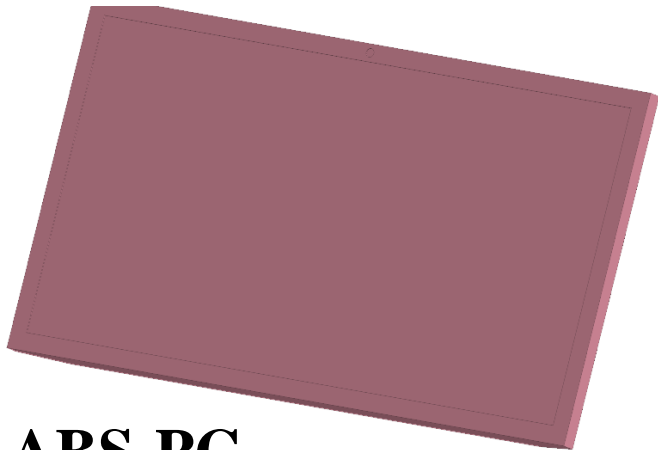


固定X,Y,Z

ALDC 12



ABS-PC



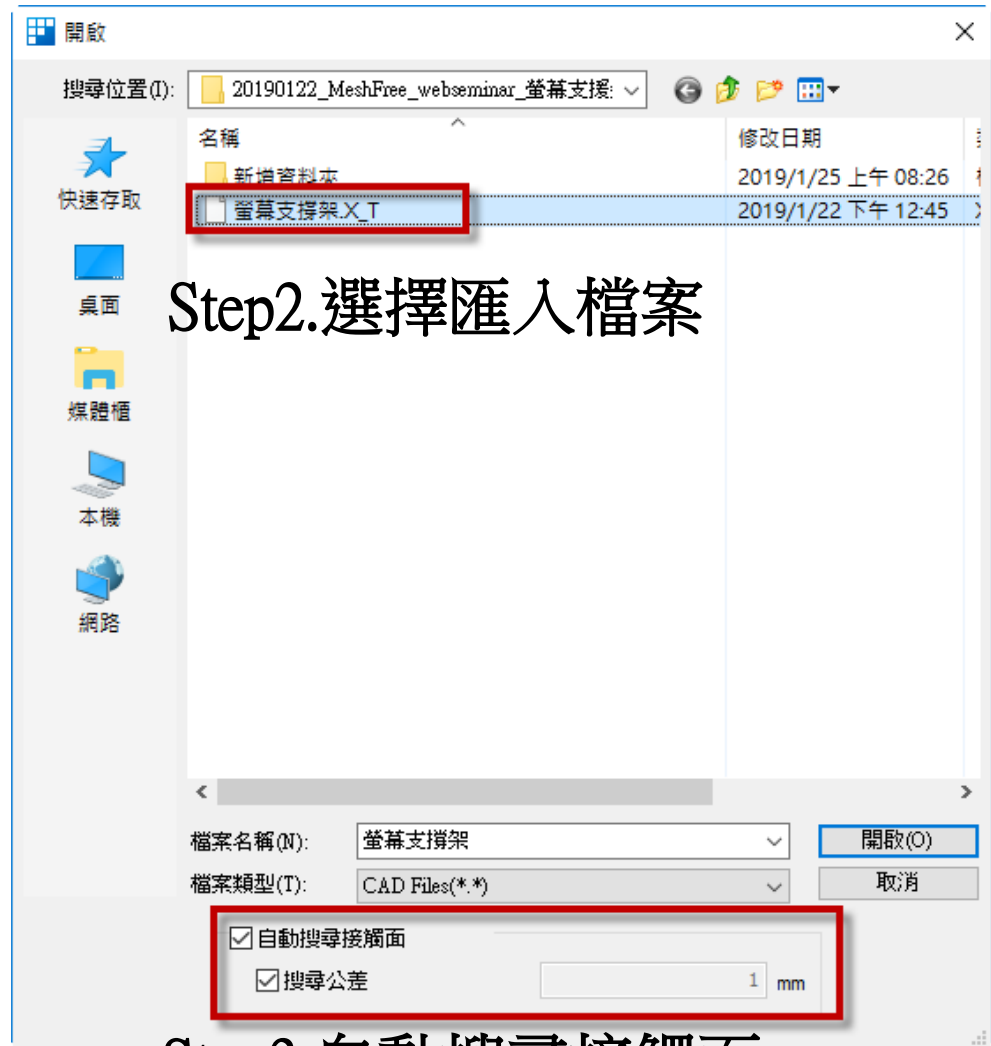
SGCC



Step1.匯入3D 模型

MeshFree支援各類CAD 格式

Parasolid (9 - 29) Files (*.x_t;*.xmt_txt;*.x_b;*.xmt_bin)
 ACIS (R1 - 2017 1.0) Files (*.sat;*.sab;*.asat;*.asab)
 STEP (AP203, AP214, AP242) Files (*.stp;*.step)
 IGES (Up to 5.3) Files (*.igs;*.iges)
 Pro-E (16 - Cren 3.0) Files (*.prt;*.prt.*;*.asm;*.asm.*)
 CATIA V4 (CATIA 4.1.9 - 4.2.4) Files (*.model;*.exp;*.session)
 CATIA V5 (V5R8 - V5-6R2016) Files (*.CATPart;*.CATProduct)
 Solid Works (98 - 2017) Files (*.sldprt;*.sldasm)
 Unigraphics (11 - NX11) Files (*.prt)
 Inventor Part (V6 - V2017) Files (*.ipt)
 Inventor Assembly (V11 - V2017) Files (*.iam)
 Solid Edge (V18 - ST9) Files (*.par;*.asm;*.psm)

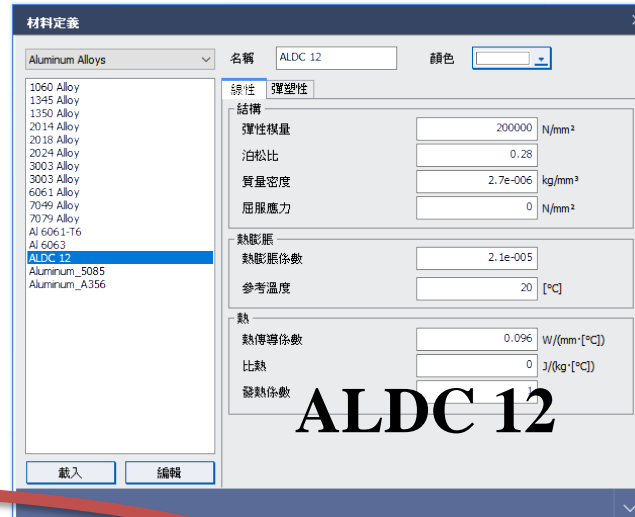


Step3.自動搜尋接觸面

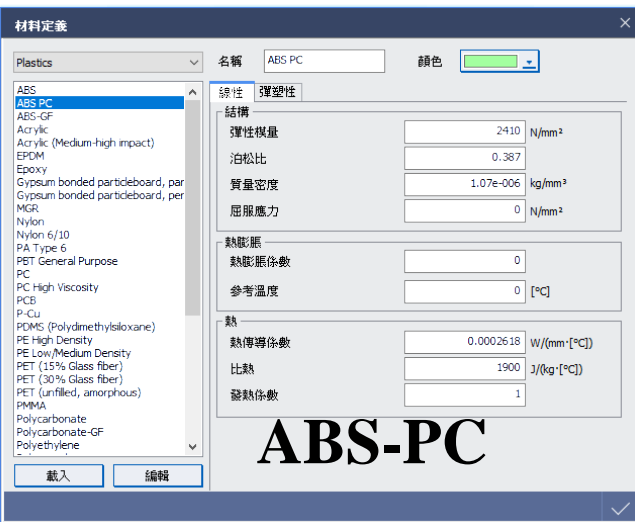
註:預設接觸類型為焊接接觸



新增材料 (ALDC12/ABS-PC/SGCC)



ALDC 12



ABS-PC



SGCC



選取底座和支架



滑鼠右鍵,材料定義

其它零件



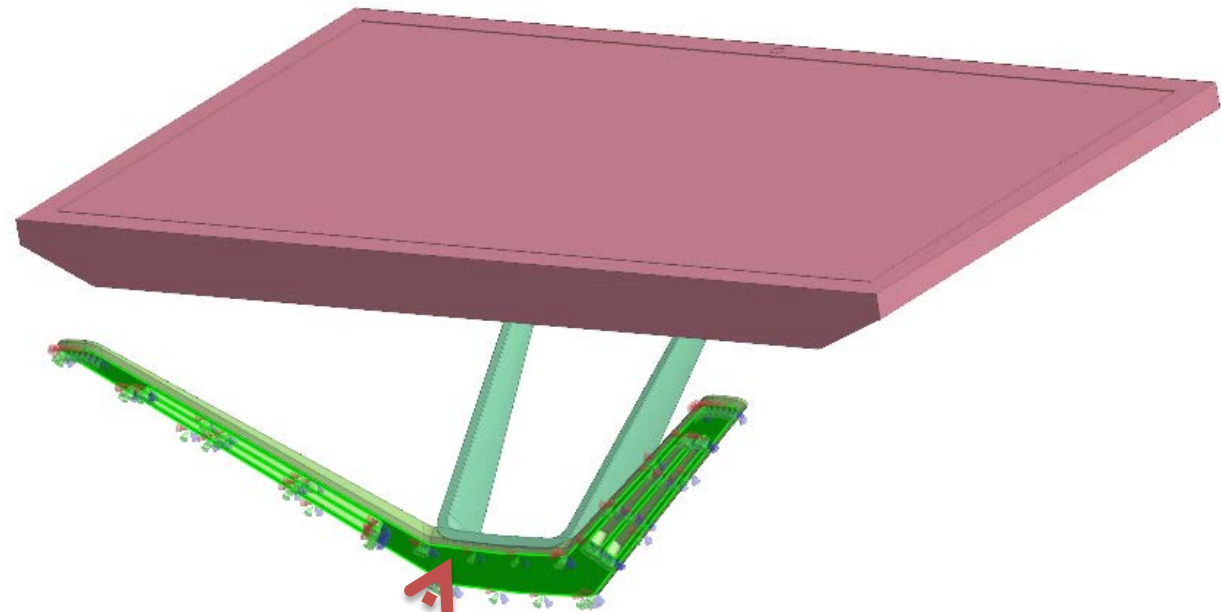
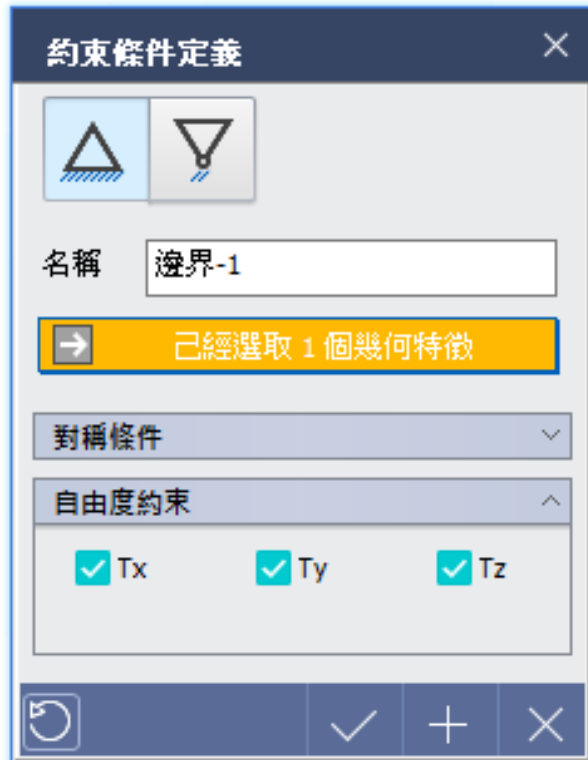
滑鼠右鍵,材料定義

選取螢幕



滑鼠右鍵,材料定義





選取特徵拘束



位移 [X]

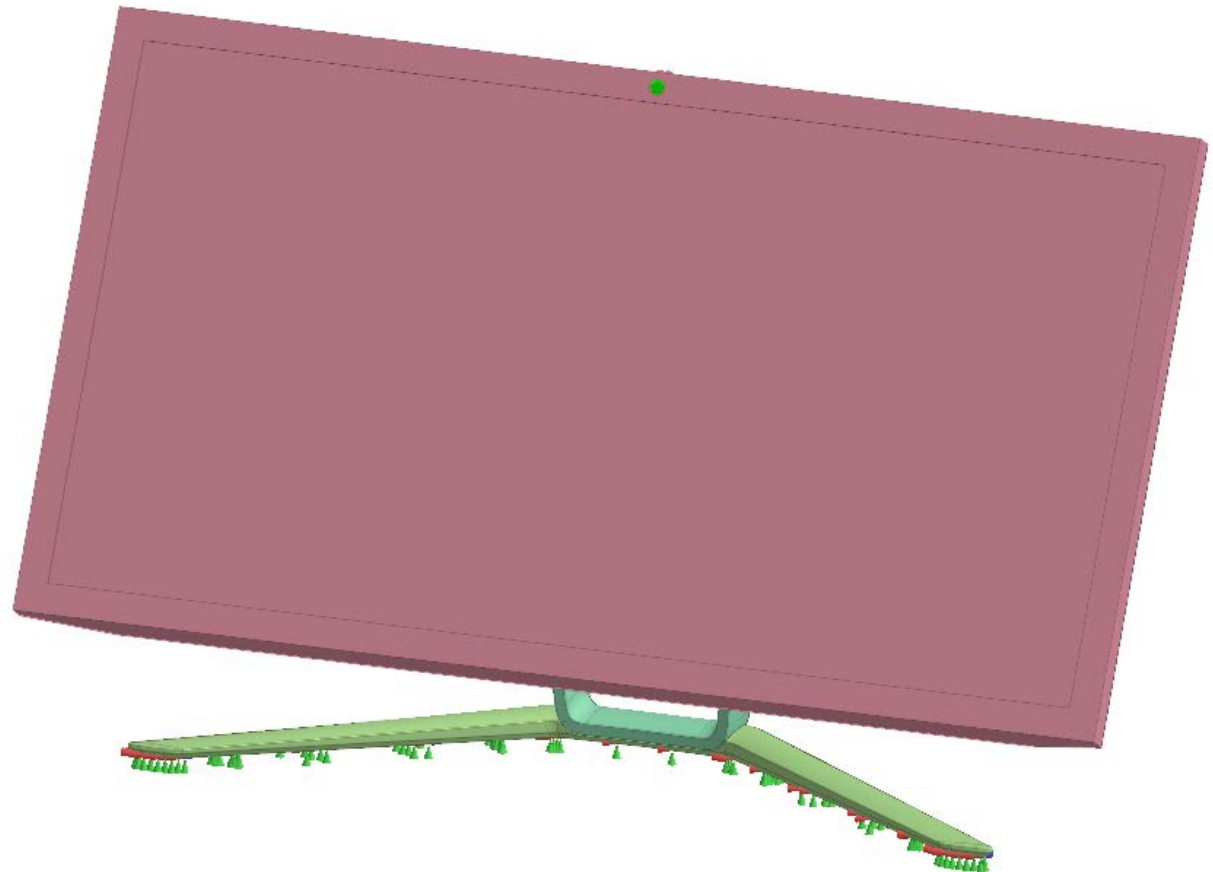
名稱 位移-2

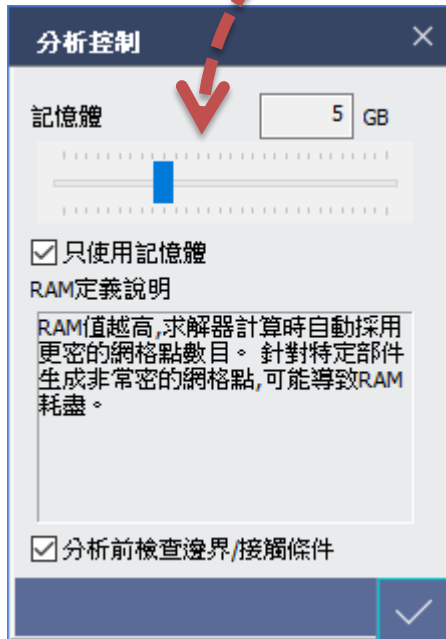
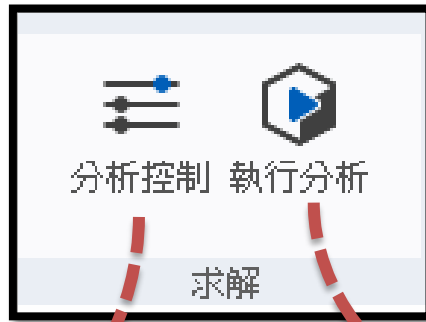
[→]

方向

<input type="checkbox"/> Tx	0 mm	<input type="checkbox"/> Rx	0
<input type="checkbox"/> Ty	0 mm	<input type="checkbox"/> Ry	0
<input checked="" type="checkbox"/> Tz	-5 mm	<input type="checkbox"/> Rz	0

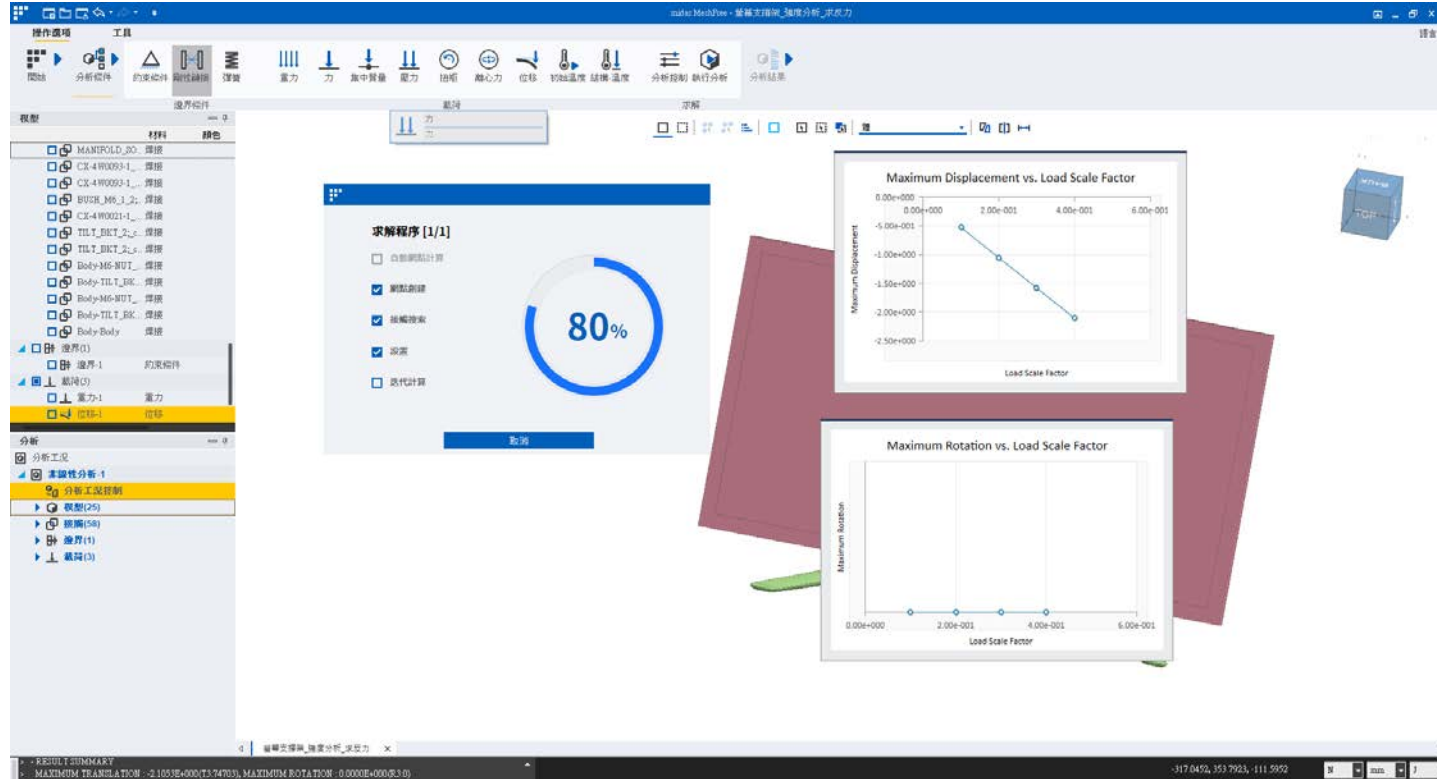
[↺] [✓] [+] [✕]



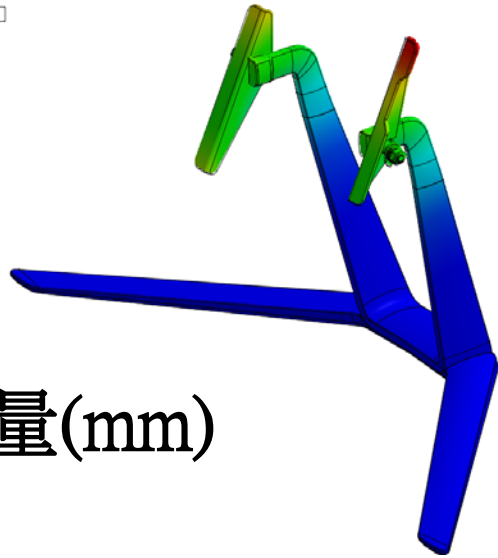


記憶體大小

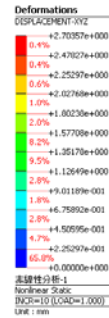
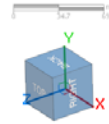
- 1.計算速度
- 2.分析準確性



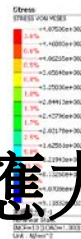
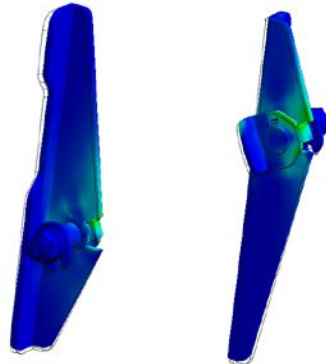
分析類型 非線性分析-1
 Step [INCR=10 (LOAD=1.000)]
 結果 DISPLACEMENT-XYZ



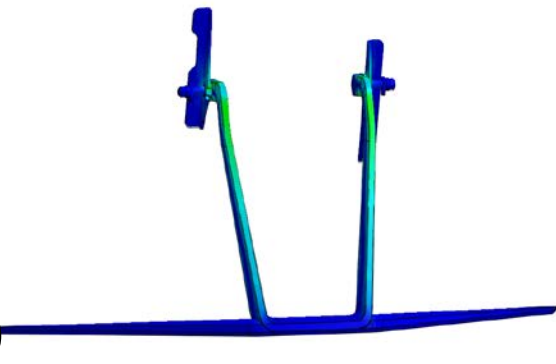
變形量(mm)



分析類型 非線性分析-1
 Step [INCR=10 (LOAD=1.000)]
 結果 STRESS-VONMISES



分析類型 非線性分析-1
 Step [INCR=10 (LOAD=1.000)]
 結果 STRESS-VONMISES



應力(MPa)



反力

已經選取 1 個幾何特徵

計算

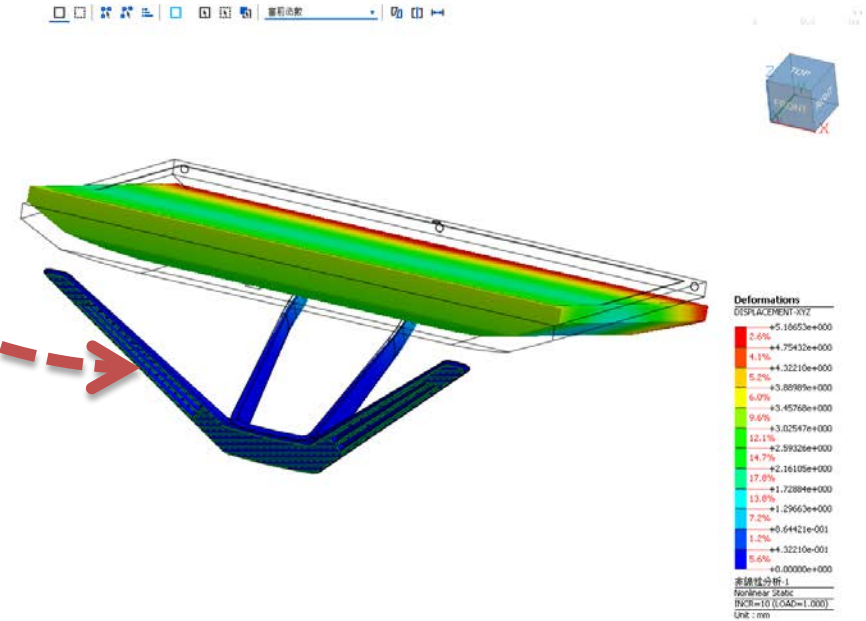
名稱	值
FX	5.02e-008
FY	166
FZ	1.31e+003

分析步

分析步：結果

- Nonlinear Static : INCR=5 (LOAD=0.500)
- Nonlinear Static : INCR=6 (LOAD=0.600)
- Nonlinear Static : INCR=7 (LOAD=0.700)
- Nonlinear Static : INCR=8 (LOAD=0.800)
- Nonlinear Static : INCR=9 (LOAD=0.900)
- Nonlinear Static : INCR=10 (LOAD=1.000)**

選取拘束位置



計算選取目標值反力。
(選擇目標面並進行計算)