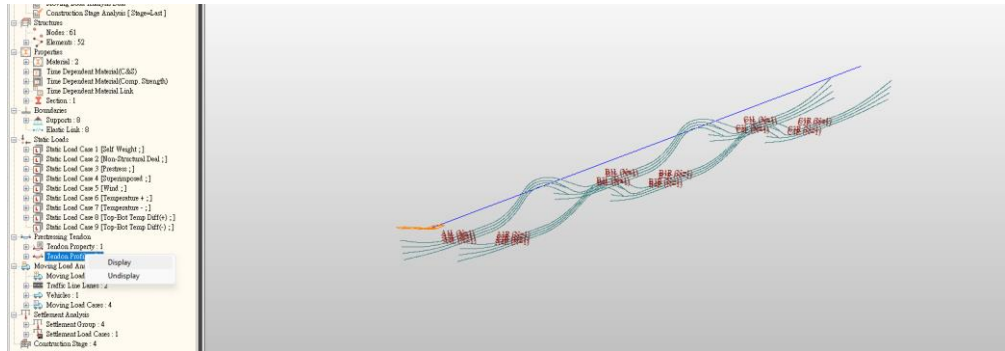




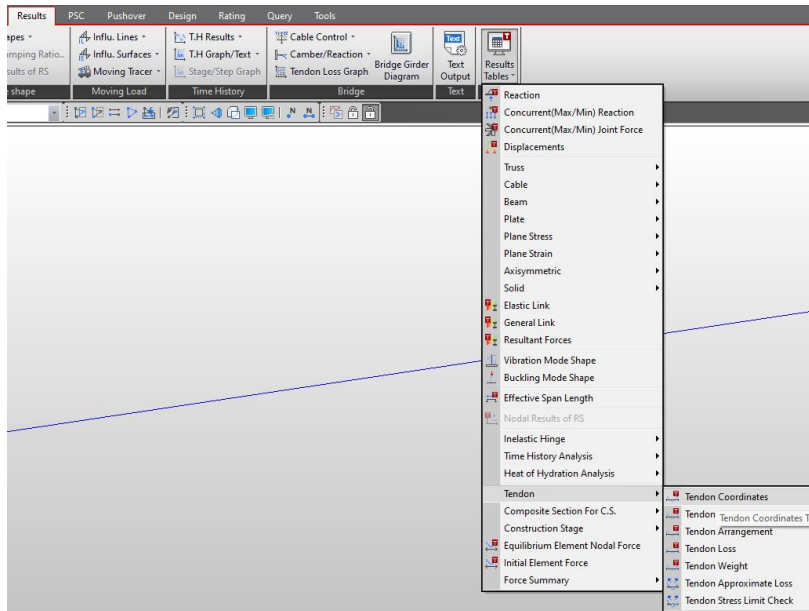
# 橋梁為曲型，如何以Tendon Coordinates資料計算出鋼腱之全域座標？



您好，關於tendon坐標的轉換，我們建議您按照以下步驟操作：  
 1.分析完成後，您可以顯示 Tendon Profile。



## 2. Results > Result Tables > Tendon ...Tendon Coordinates。



3. 座標將顯示在下方，我們可以將它們匯出至 Excel。

	Tendon Name	No	x (m)	y (m)	z (m)
	A1L	0	0.0000	0.0000	0.0000
	A1L	1	0.0000	2.4660	-1.0000
	A1L	2	0.6250	2.4502	-1.0790
	A1L	3	1.2500	2.4341	-1.1593
	A1L	4	1.8750	2.4176	-1.2420
	A1L	5	2.5000	2.4004	-1.3281
	A1L	6	3.1250	2.3829	-1.4157
	A1L	7	3.7500	2.3656	-1.5018
	A1L	8	4.3750	2.3483	-1.5837
▶	A1L	9	5.0000	2.3340	-1.6602
	A1L	10	5.6250	2.3197	-1.7316
	A1L	11	6.2500	2.3063	-1.7984
	A1L	12	6.8750	2.2939	-1.8607
	A1L	13	7.5000	2.2823	-1.9184
	A1L	14	8.1250	2.2717	-1.9715
	A1L	15	8.7500	2.2620	-2.0199
	A1L	16	9.3750	2.2533	-2.0637
	A1L	17	10.0000	2.2454	-2.1028
	A1L	18	10.6250	2.2385	-2.1373

Copy  
 Find...  
 Sorting Dialog...  
 Style Dialog...  
 Show Graph...  
 Export to Excel...  
 Dynamic Report Table...

但要記住, No. 0 是 Global Coordinates, 其他是local coordinates 相對於 global coordinates。所以在 No. 0 號之後，其他座標將以 No. 0 號座標為基準 (在命名相似性範圍內)。

	Tendon Name	No	x (m)	y (m)	z (m)
	A1L	63	38.7500	2.5969	-0.3457
	A1L	64	39.3750	2.6034	-0.3132
	A1L	65	40.0000	2.6060	-0.3000
	A1L	66	40.5000	2.6057	-0.3016
	A1L	67	41.0000	2.6034	-0.3130
	A1L	68	41.5000	2.5994	-0.3330
	A1L	69	42.0000	2.5939	-0.3607
	A1L	70	42.5000	2.5869	-0.3953
	A1L	71	43.0000	2.5786	-0.4370
	A1L	72	43.5000	2.5688	-0.4862
	A1L	73	44.0000	2.5573	-0.5433
	A1L	74	44.5000	2.5443	-0.6086
	A1L	75	45.0000	2.5297	-0.6817
	A1L	76	45.5000	2.5135	-0.7623
	A1L	77	46.0000	2.4960	-0.8500
	A1L	78	46.5000	2.4772	-0.9442
	A1L	79	47.0000	2.4573	-1.0434
	A1L	80	47.5000	2.4368	-1.1458
	A1L	81	48.0000	2.4160	-1.2500
▶	A1R	0	0.0000	0.0000	0.0000
	A1R	1	0.0000	-2.4660	-1.0000
	A1R	2	0.6250	-2.4502	-1.0790
	A1R	3	1.2500	-2.4341	-1.1593
	A1R	4	1.8750	-2.4176	-1.2420
	A1R	5	2.5000	-2.4004	-1.3281
	A1R	6	3.1250	-2.3829	-1.4157
	A1R	7	3.7500	-2.3656	-1.5018
	A1R	8	4.3750	-2.3493	-1.5837
	A1R	9	5.0000	-2.3340	-1.6602
	A1R	10	5.6250	-2.3197	-1.7316
	A1R	11	6.2500	-2.3063	-1.7984
	A1R	12	6.8750	-2.2939	-1.8607
	A1R	13	7.5000	-2.2823	-1.9184
	A1R	14	8.1250	-2.2717	-1.9715
	A1R	15	8.7500	-2.2620	-2.0199
	A1R	16	9.3750	-2.2533	-2.0637
	A1R	17	10.0000	-2.2454	-2.1028
	A1R	18	10.6250	-2.2385	-2.1373