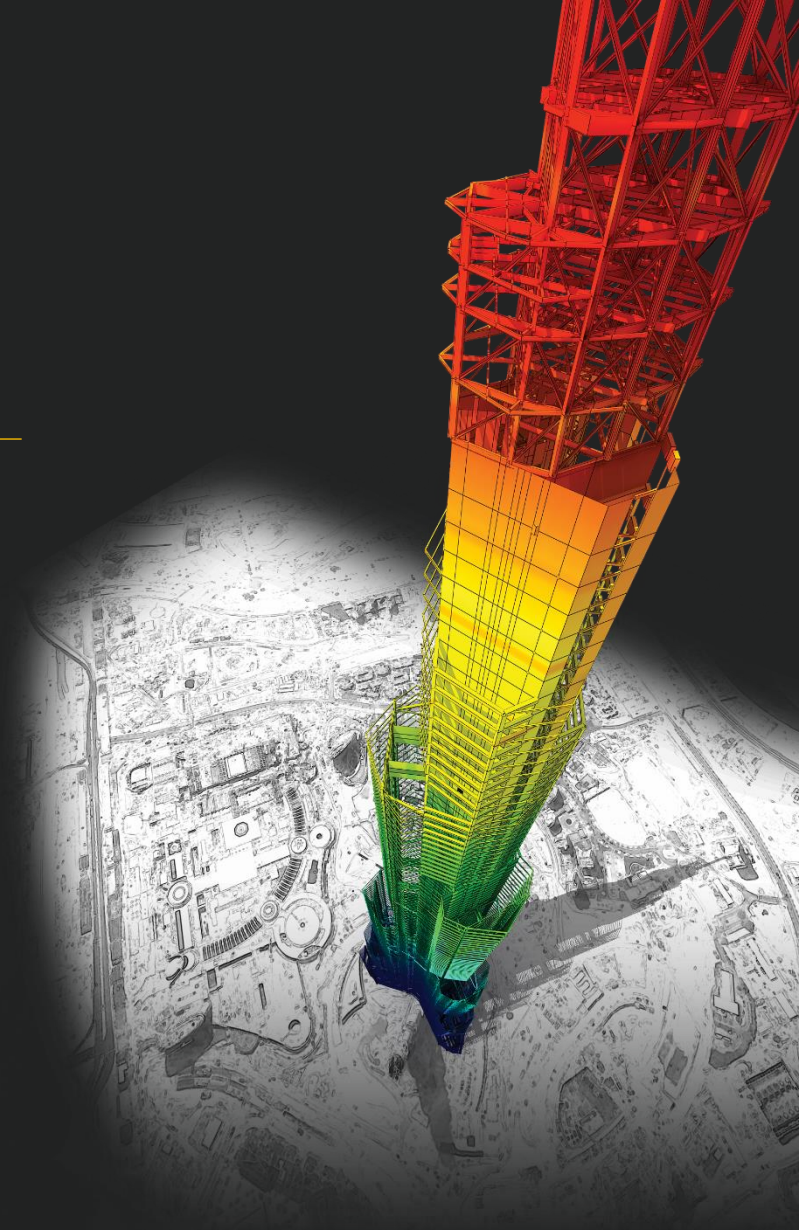




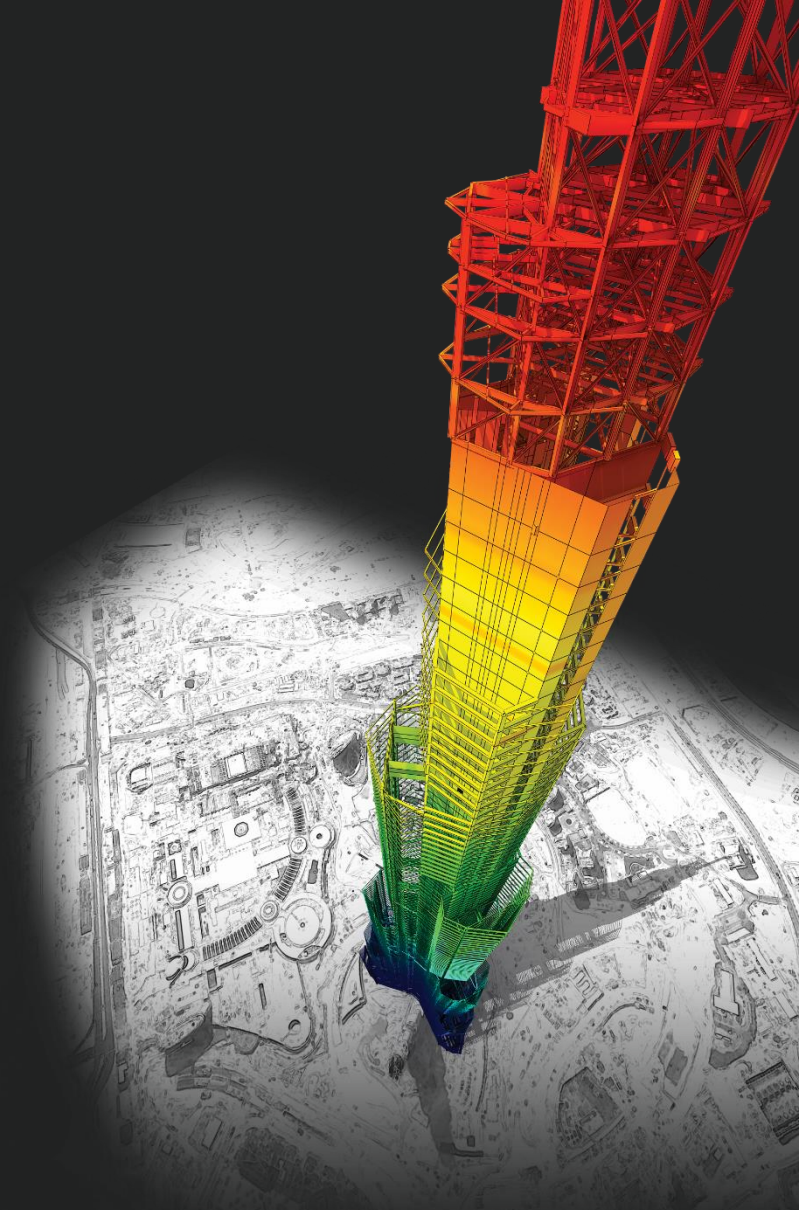
用土壤彈簧，位移量是很大



DESIGN OF General Structures

Integrated Design System for Building and General Structures

問題

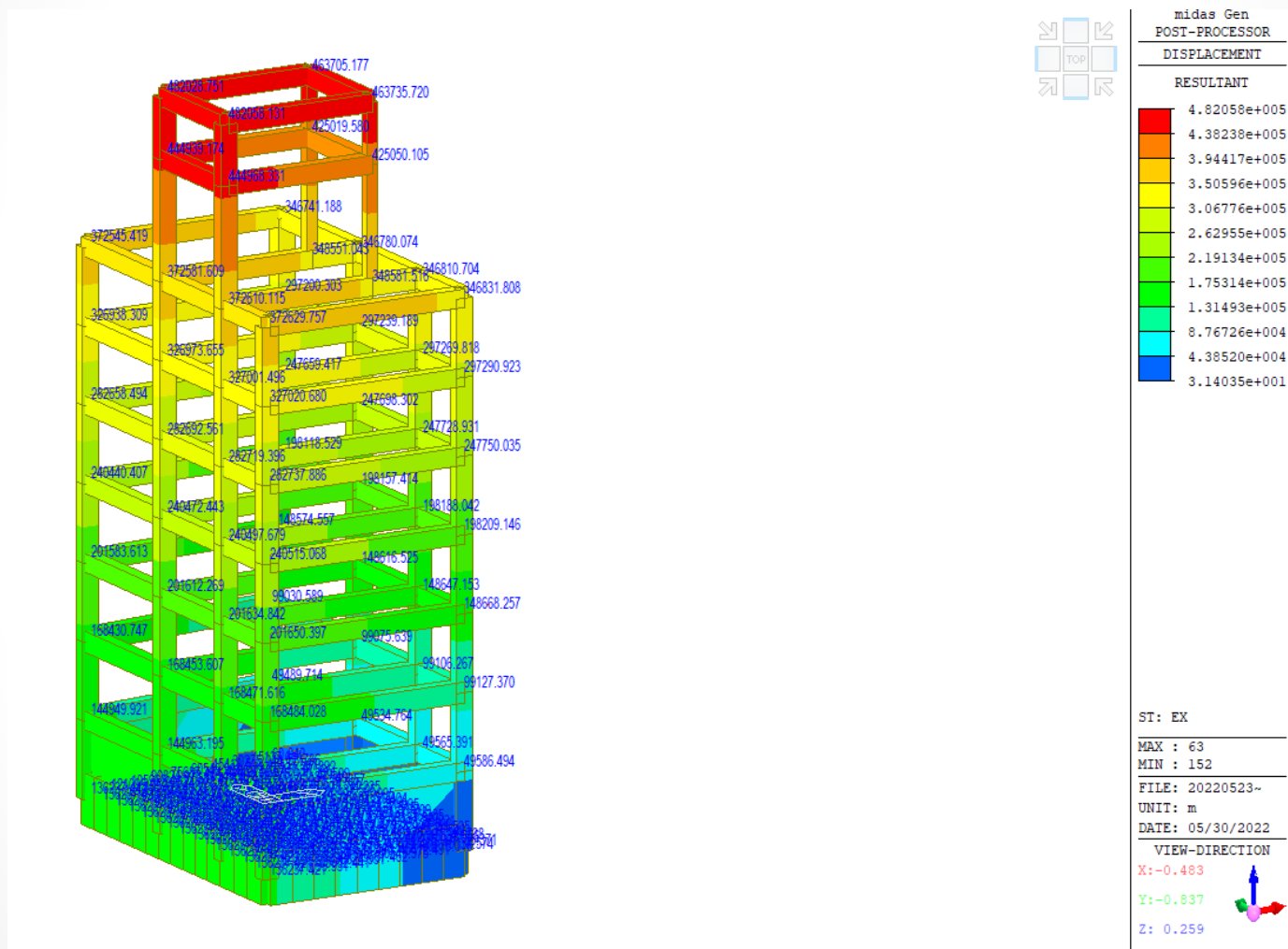


DESIGN OF General Structures

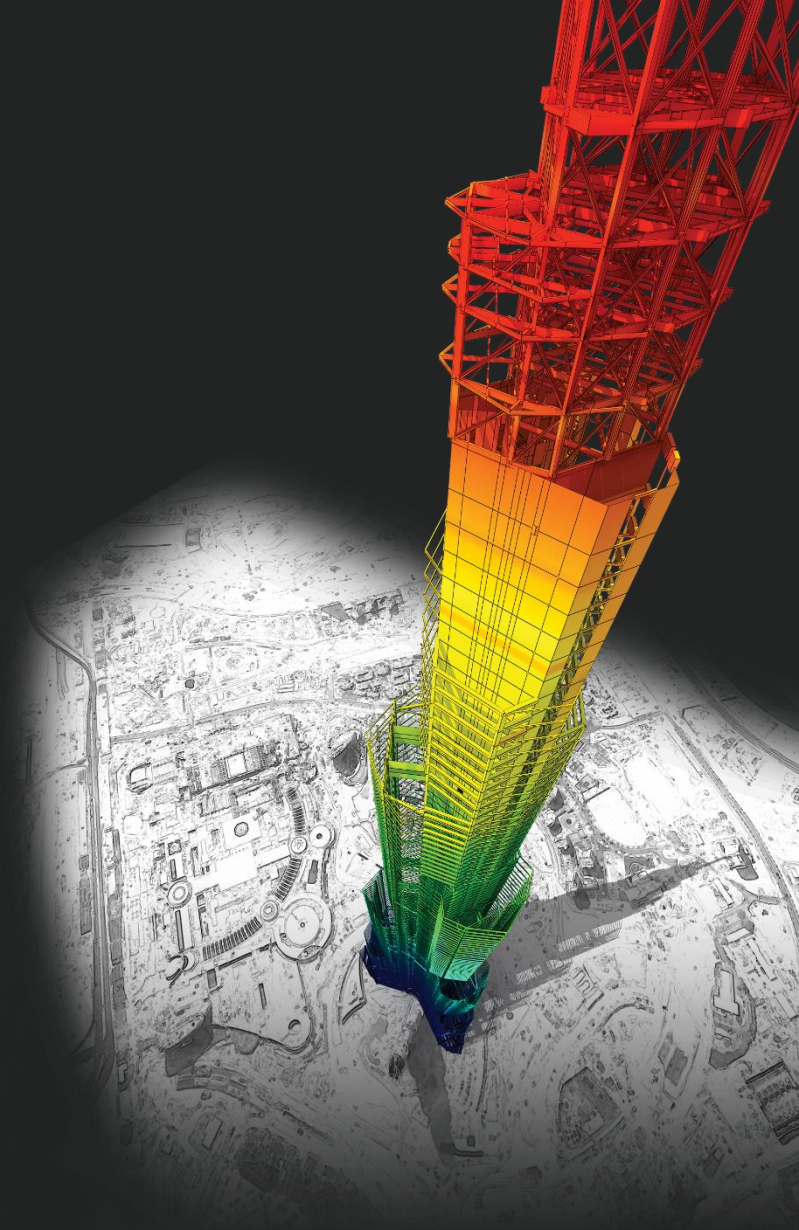
Integrated Design System for Building and General Structures

問題

想請問設定土壤彈簧之相關疑問，依照下方影片之步驟設定土壤彈簧+質心附近一點之點彈簧及將地震力考慮 self-weight，但位移量還是會很大，想請問該如何處理。



回答



DESIGN OF General Structures


Integrated Design System for Building and General Structures

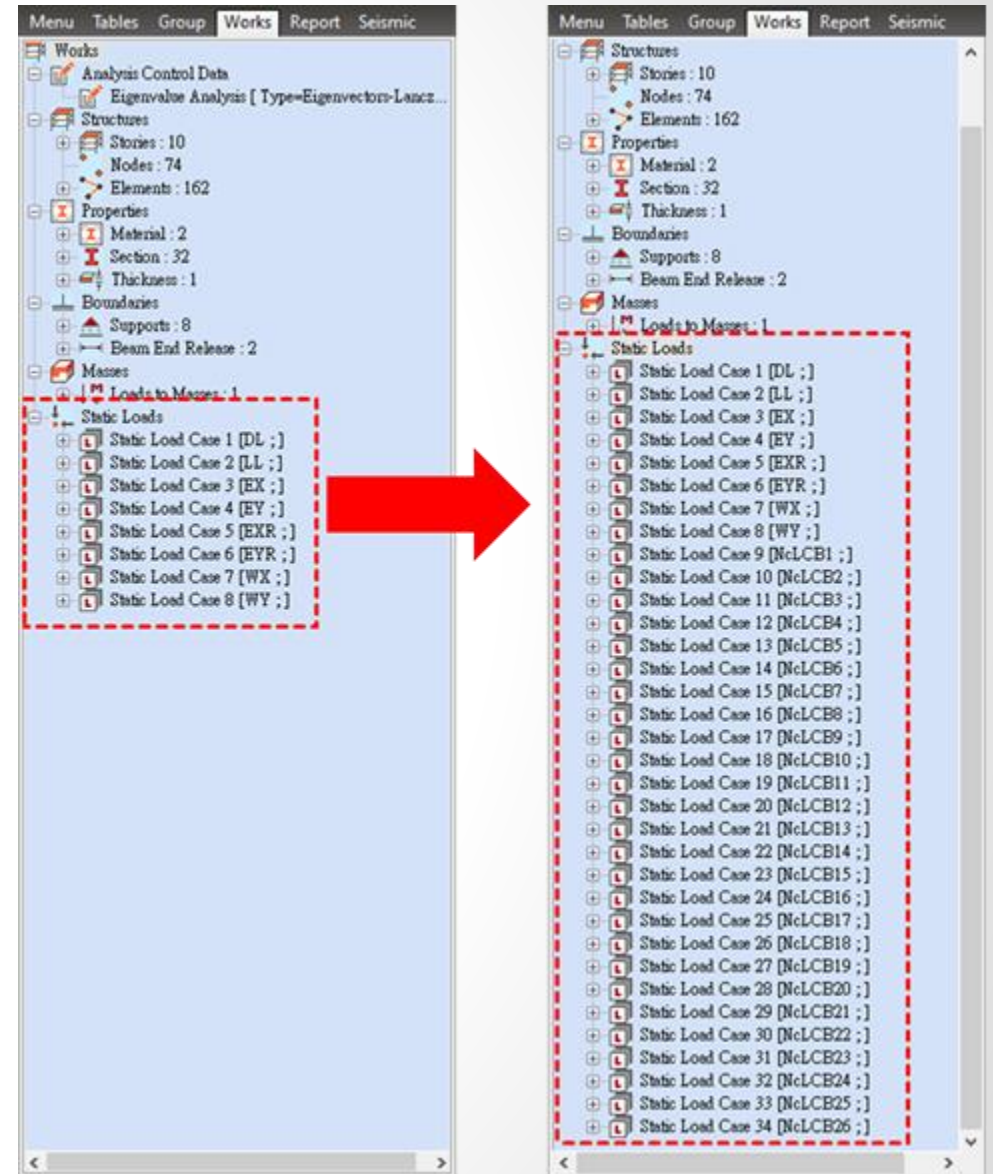
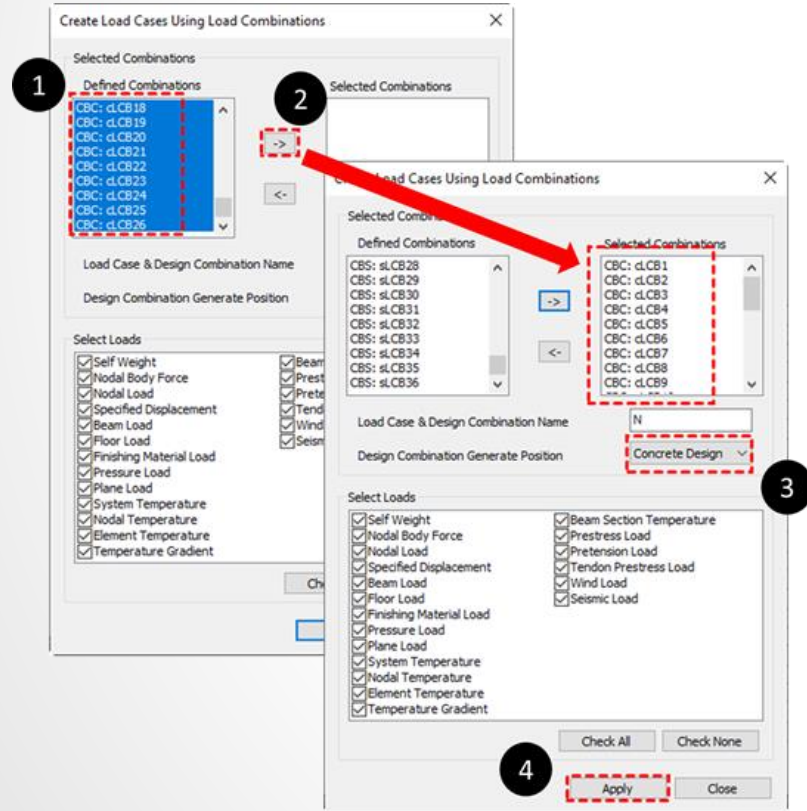
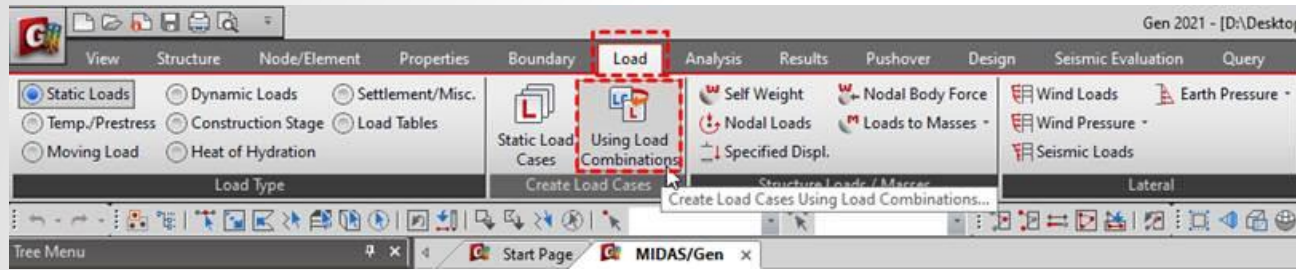
我已經看您的檔案，您還沒做Create Load Case Using Load Combination。



如何做 Create Load Cases Using Load Combination

在Load > Create Load Cases > Using Load Combination。然後您可以選混凝土的Load Combination。

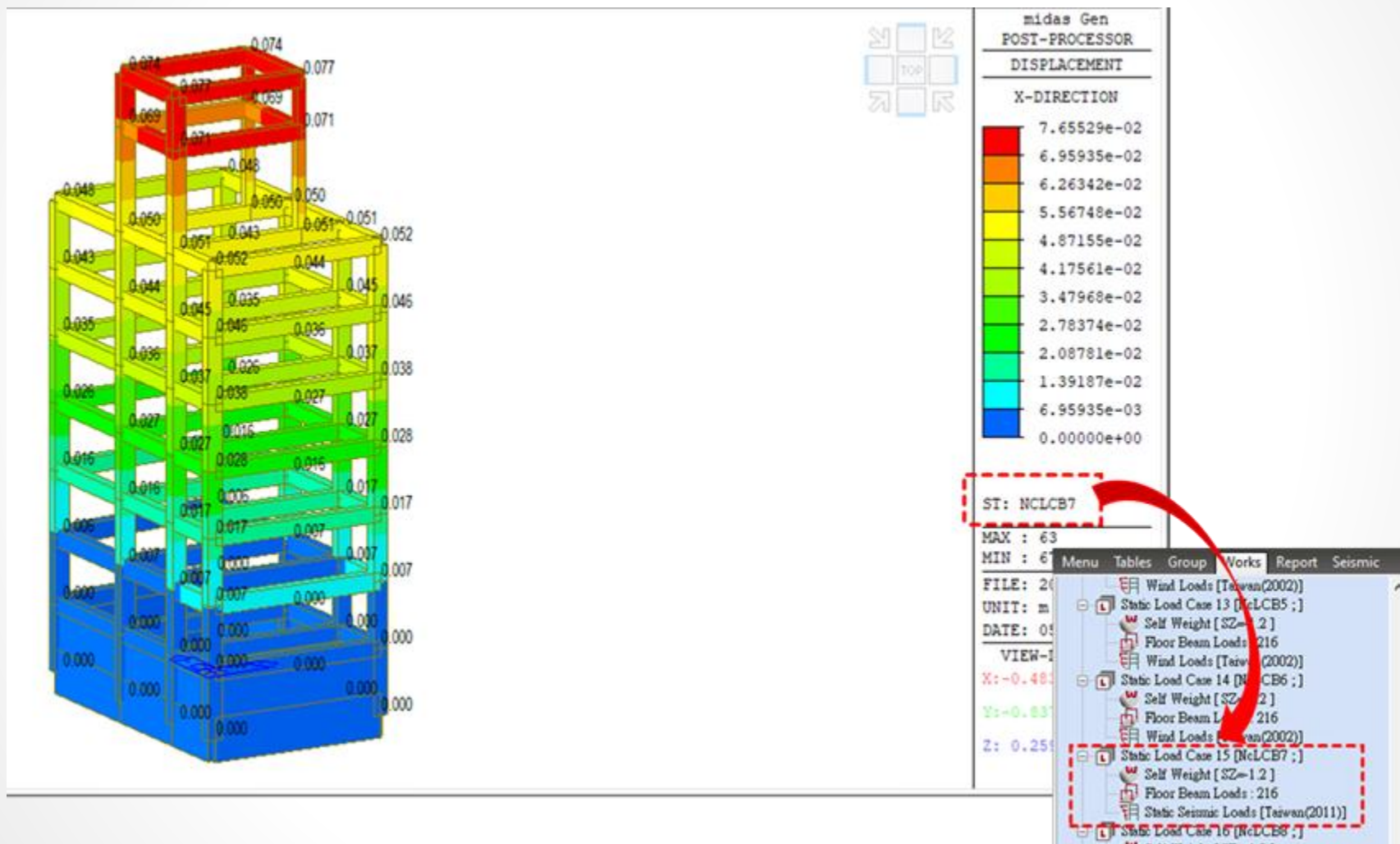
按  然後按Apply。



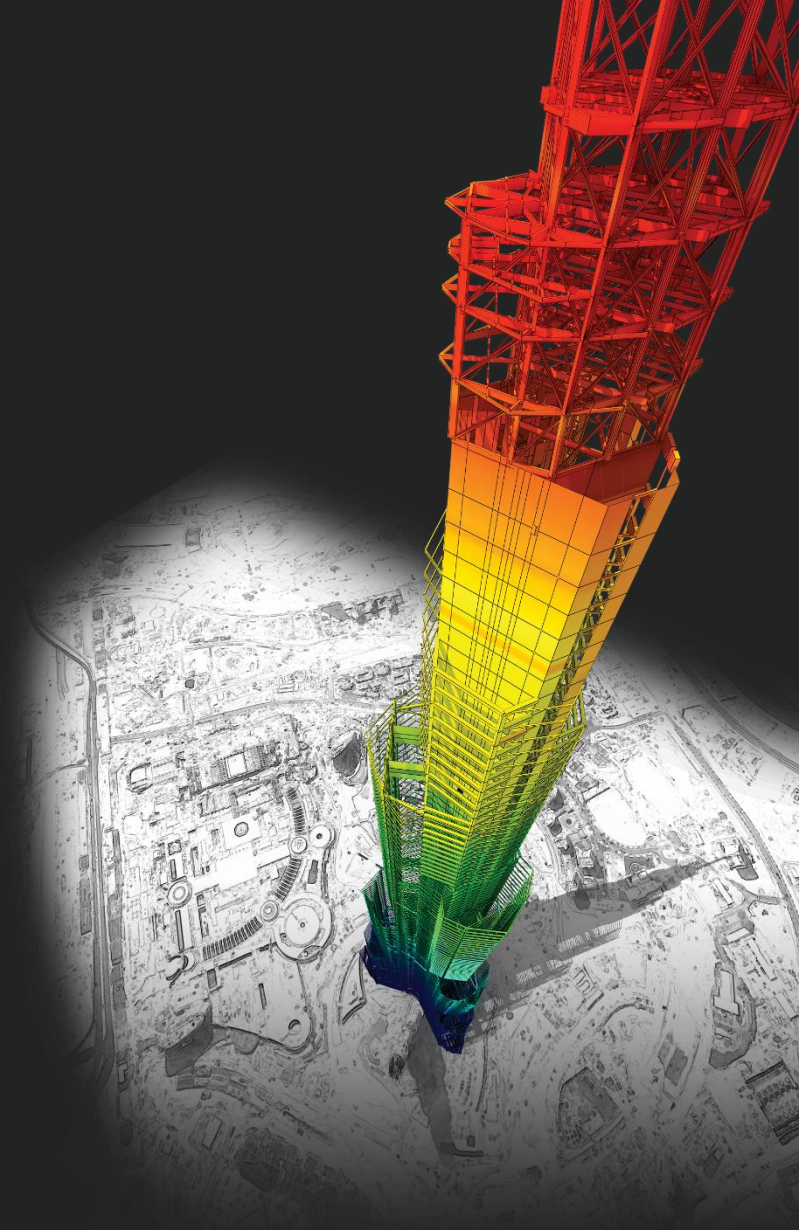
結果

您可以跑分析然後看 Load Case Using Load Combination 的結果。

比如說我們要看 NcLCB7 的結果 (有 Self Weight、Beam load、和地震力)，模型的 deformation 正常。



Thank You



DESIGN OF General Structures

Integrated Design System for Building and General Structures