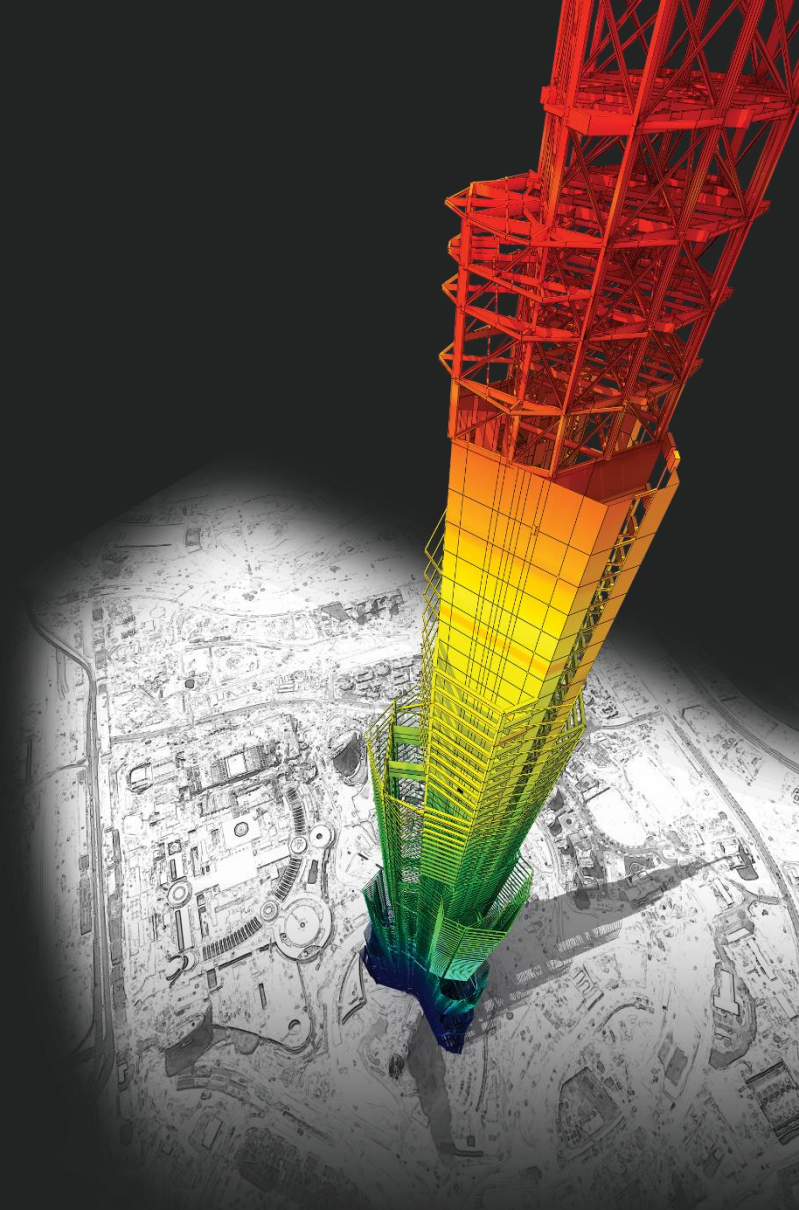




## Steel Design Result Ratio

---

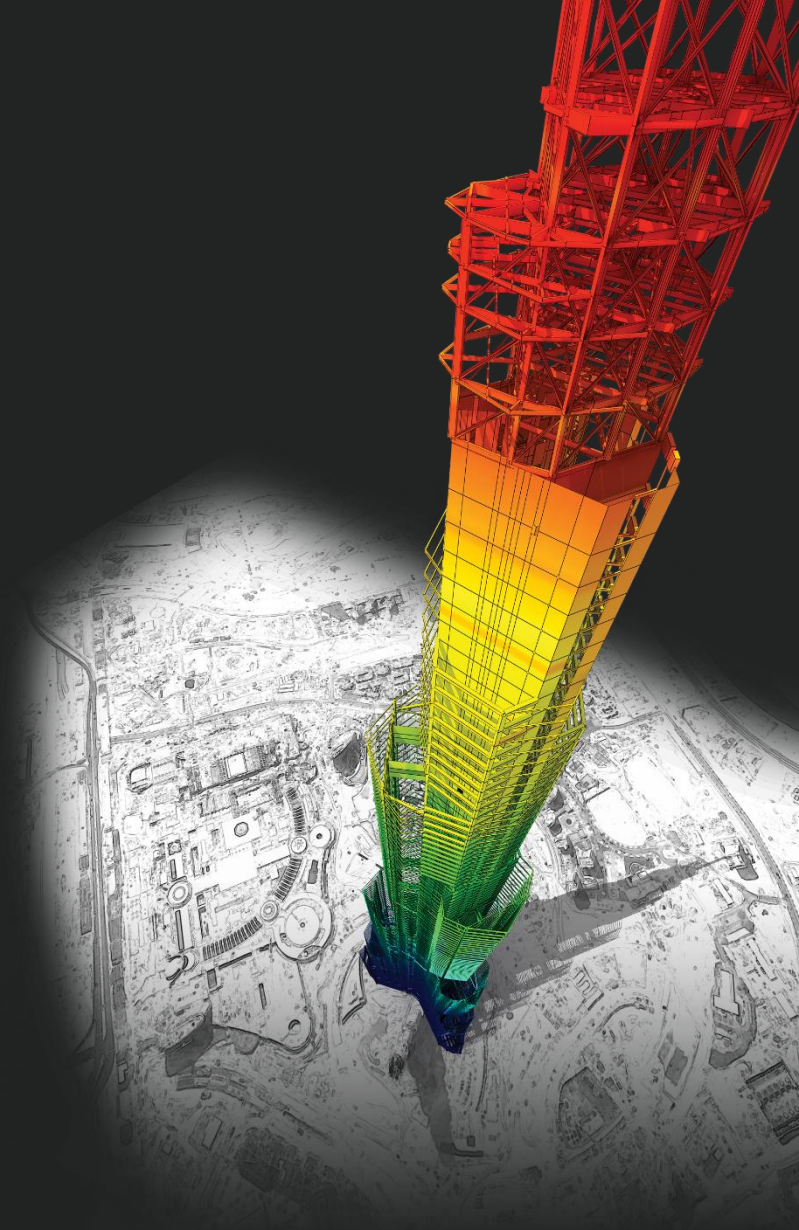


*DESIGN OF General Structures*

*Integrated Design System for Building and General Structures*

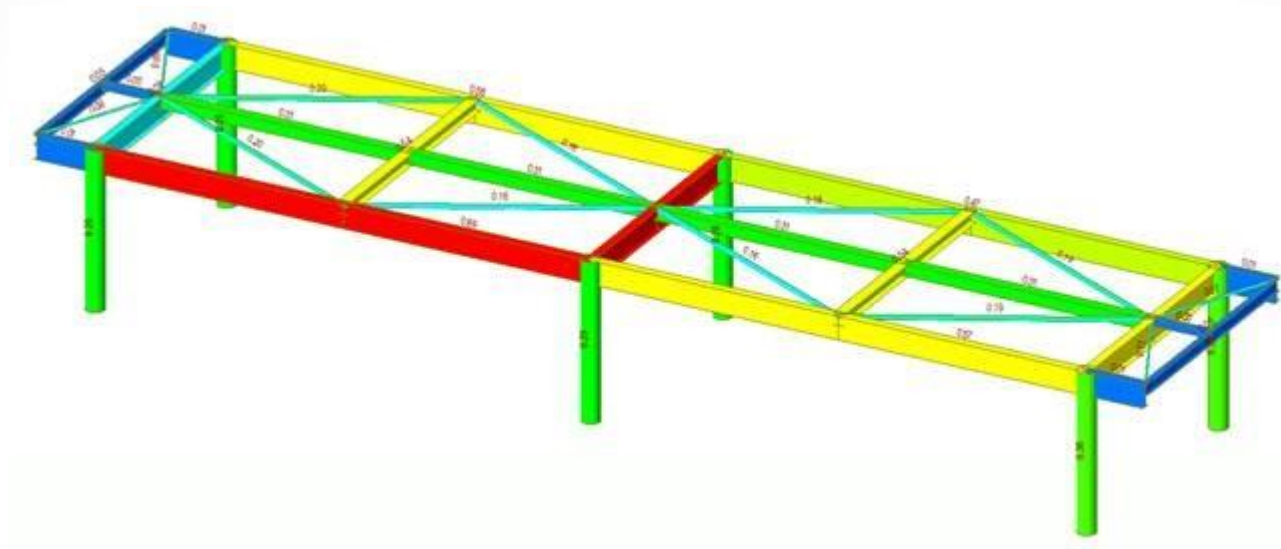
問題

---



*DESIGN OF General Structures*

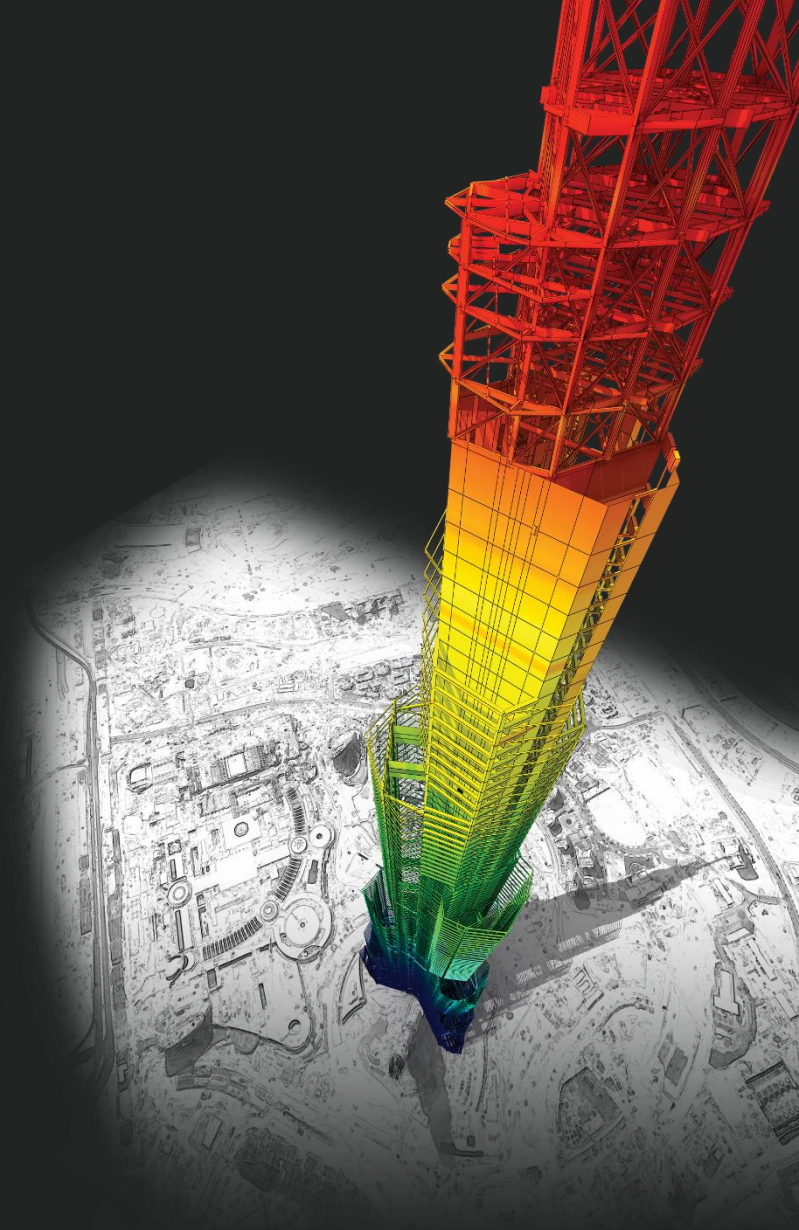
*Integrated Design System for Building and General Structures*



如何的到圖形化應力比 (如何得到上圖) ?

# 回答

---

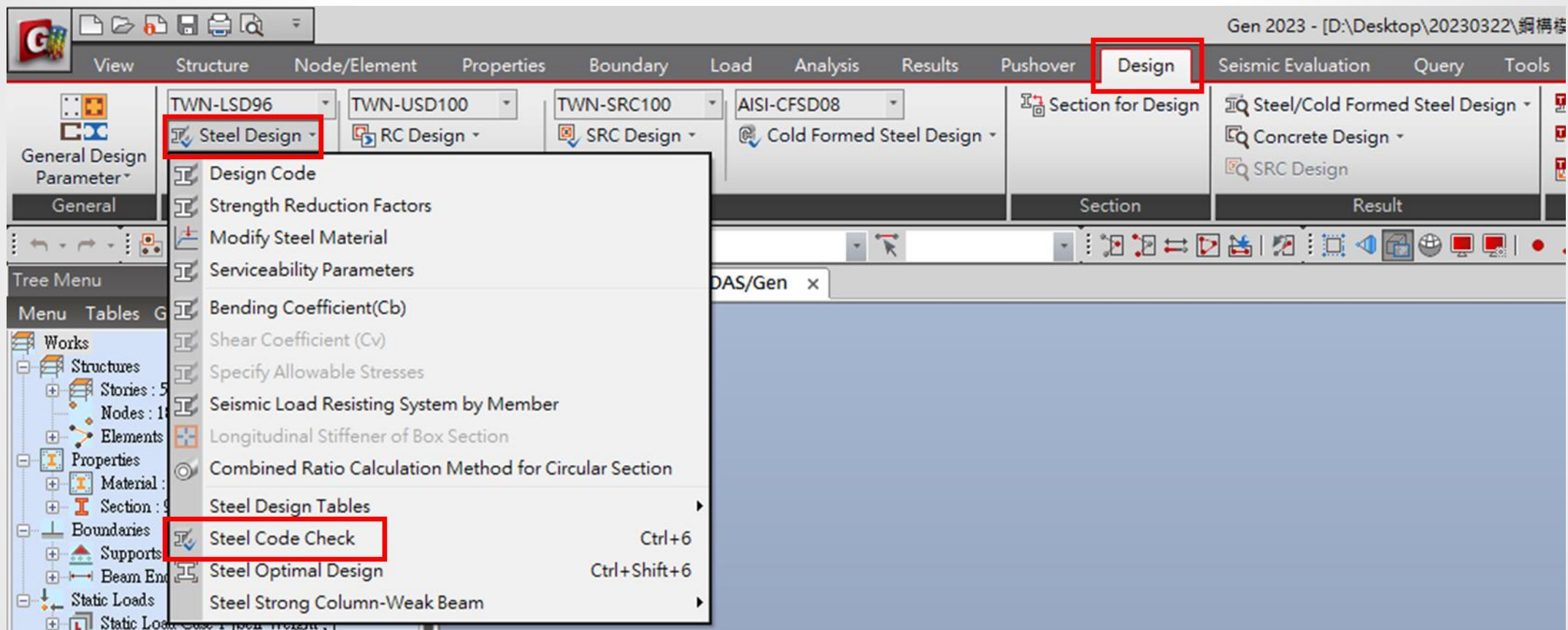


*DESIGN OF General Structures*

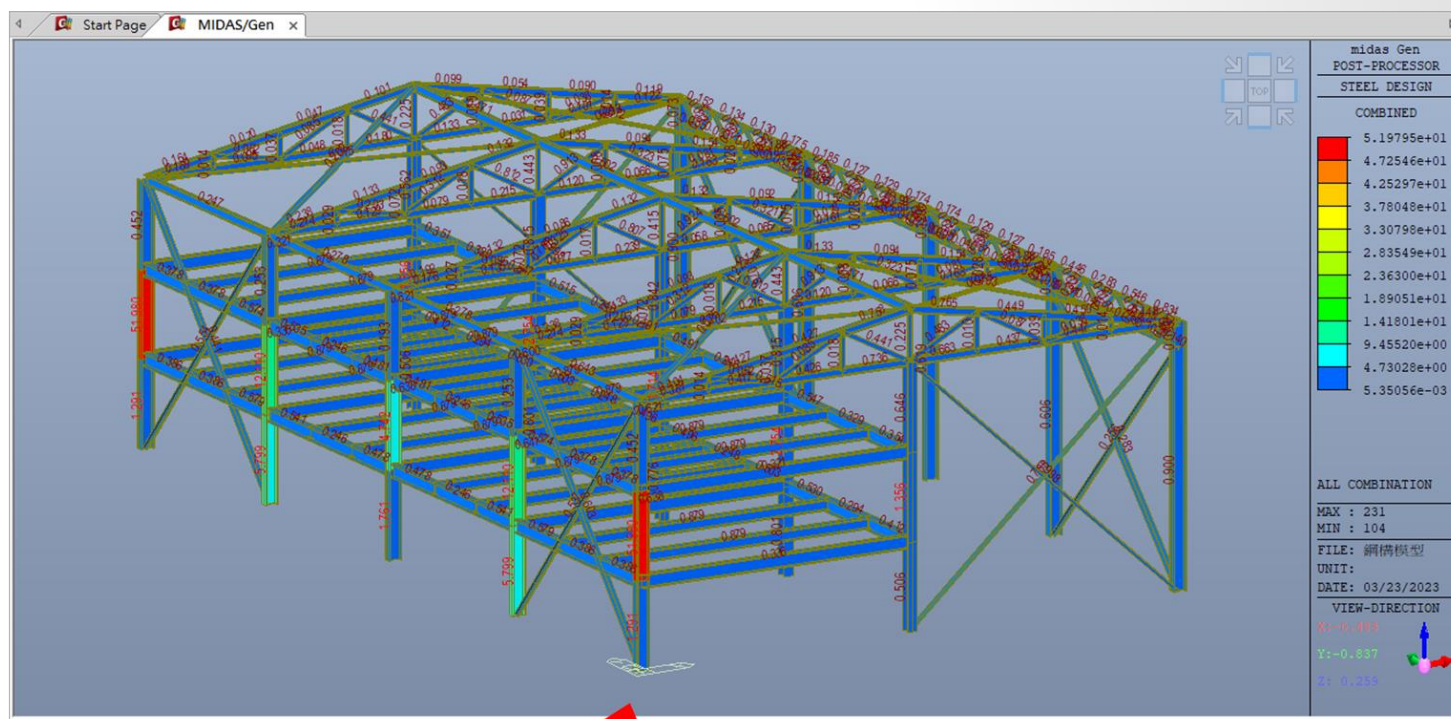
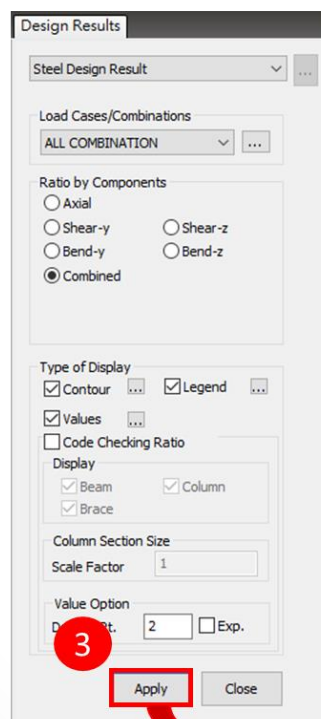
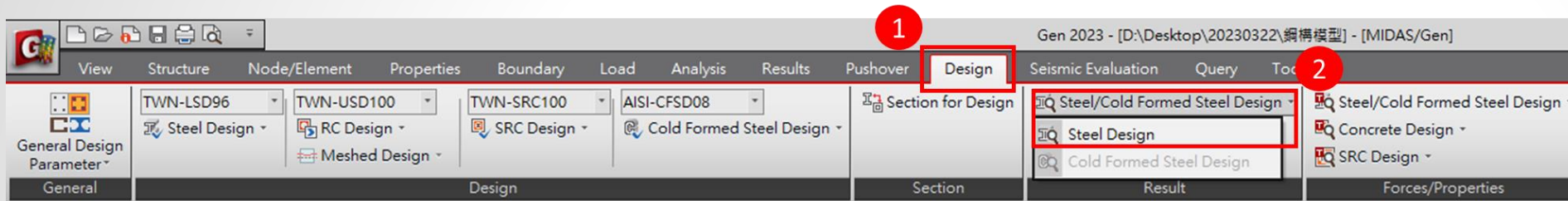
*Integrated Design System for Building and General Structures*

首先您應該做設計。

在 Design > Steel Design > Steel Code Check。

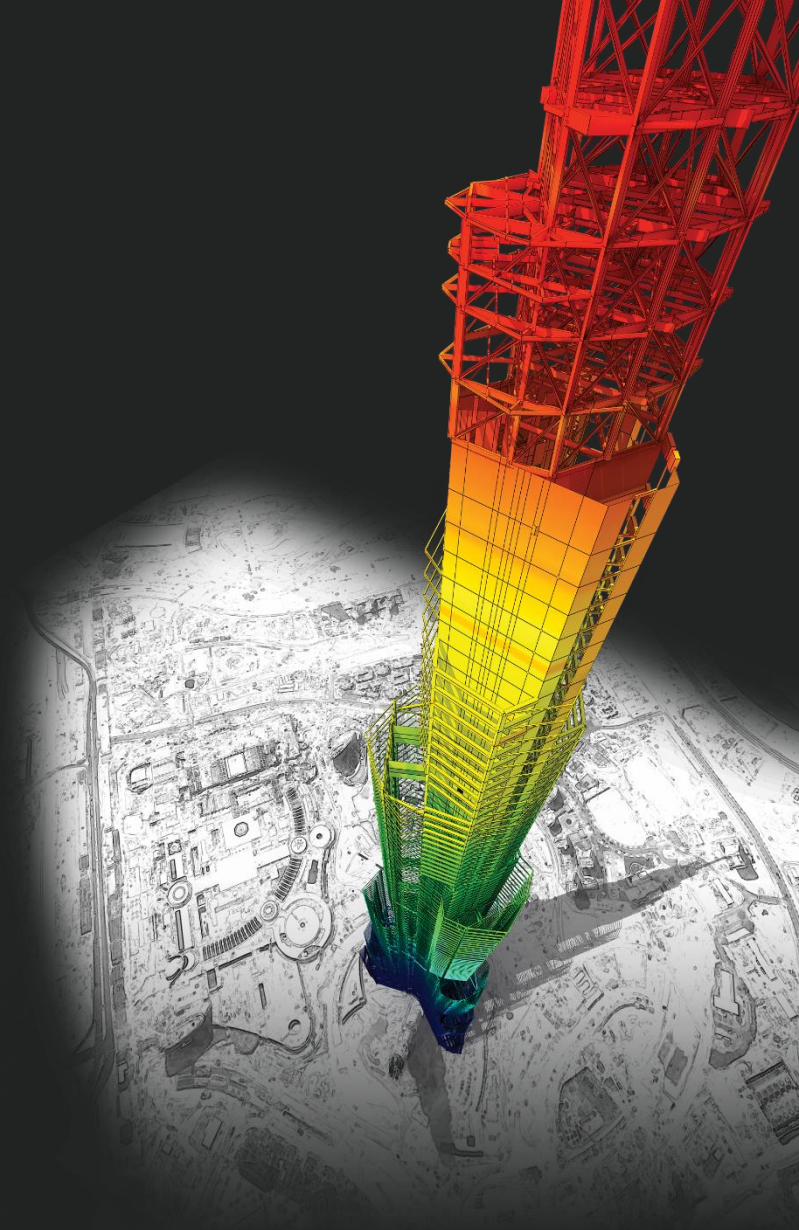


然後您在 Design > Result > Steel/Cold Formed Steel Design > Steel Design ◦



# Thank You

---



*DESIGN OF General Structures*

*Integrated Design System for Building and General Structures*