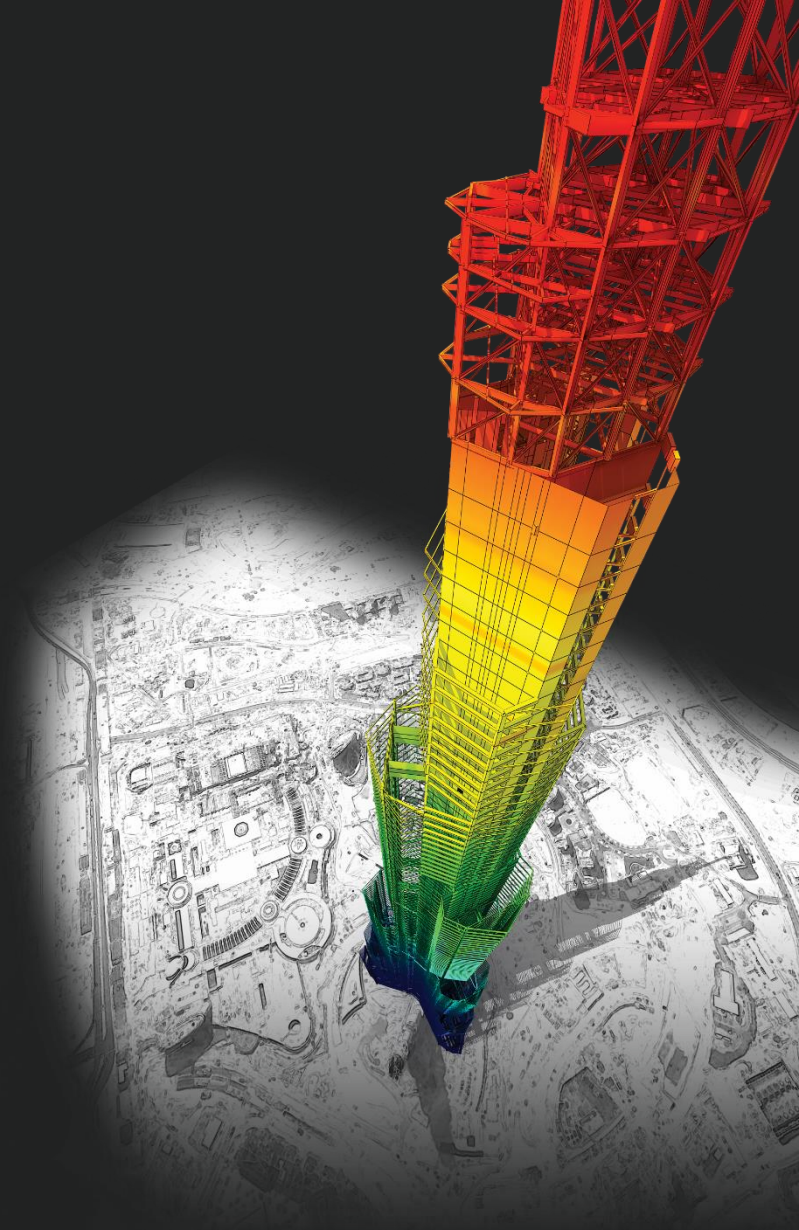




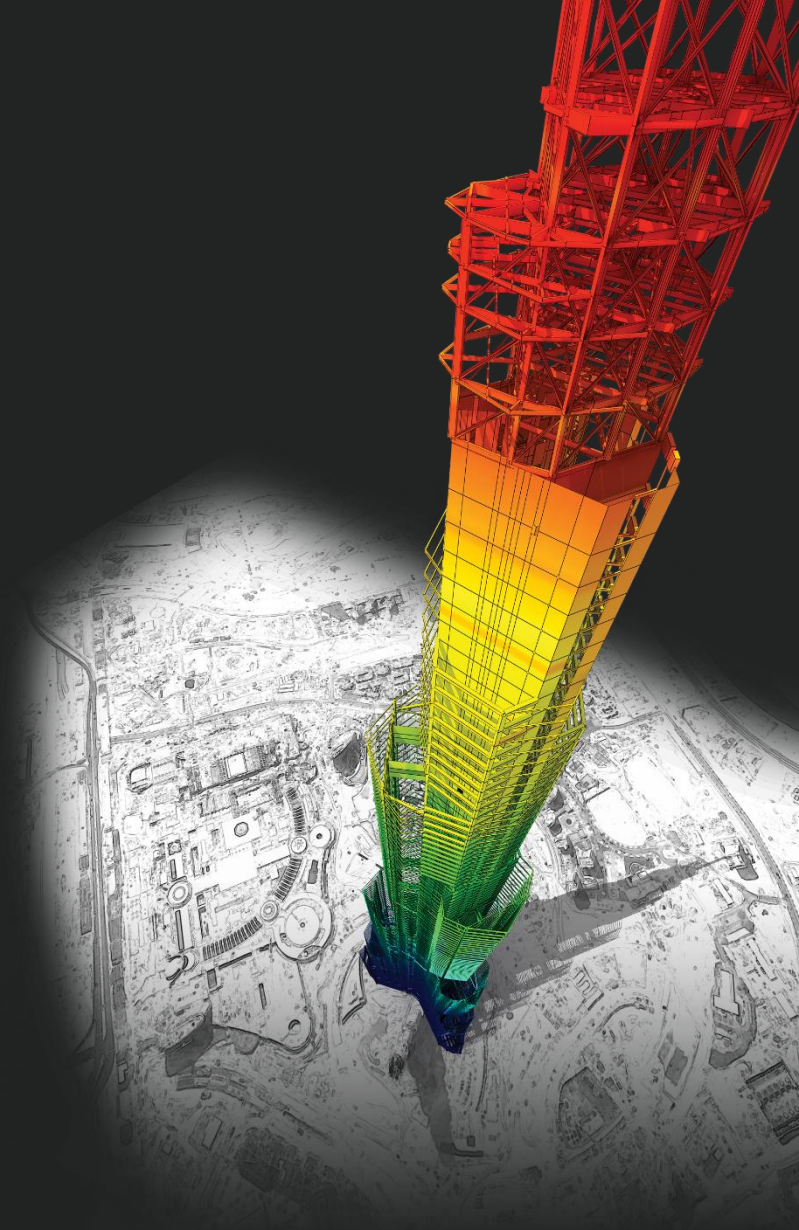
不能建立樓板



DESIGN OF General Structures

Integrated Design System for Building and General Structures

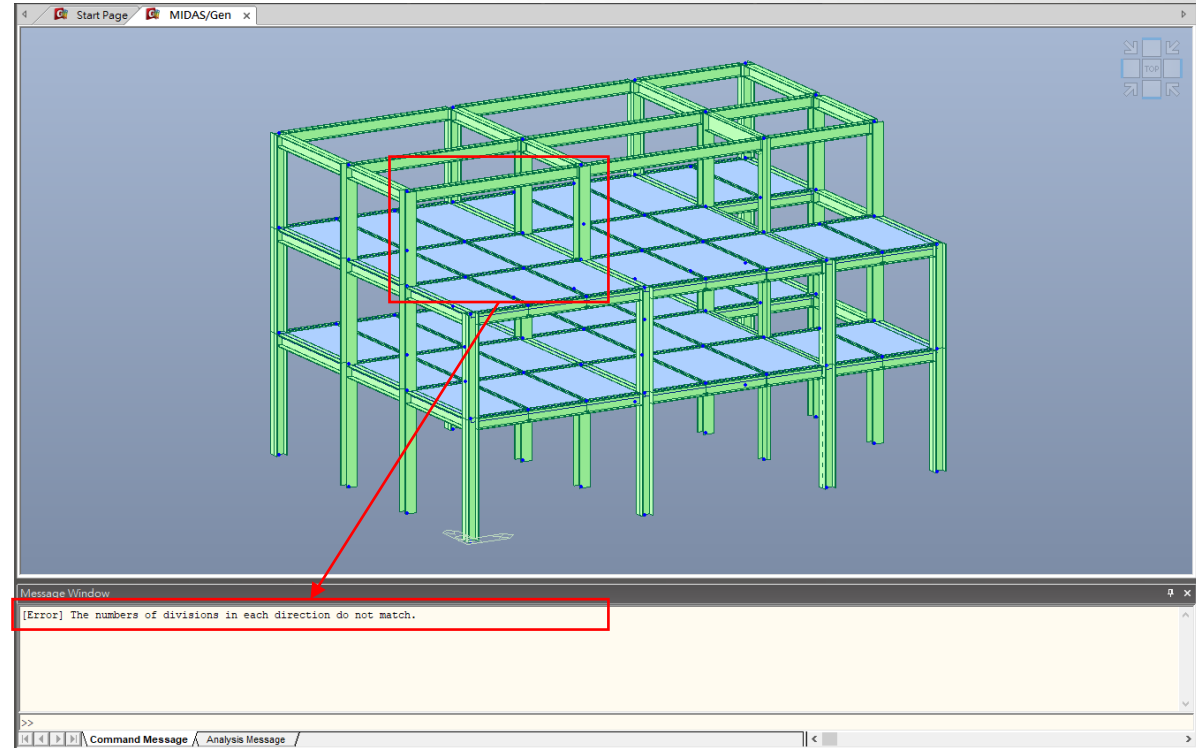
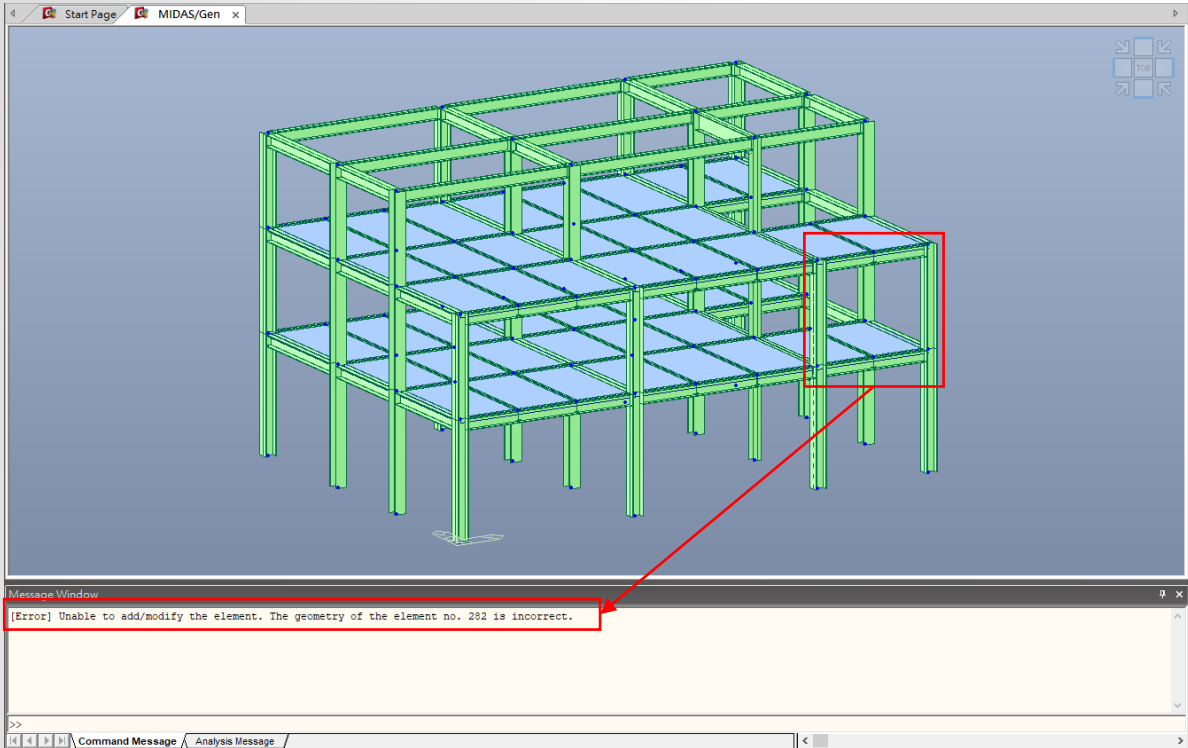
問題



DESIGN OF General Structures

Integrated Design System for Building and General Structures

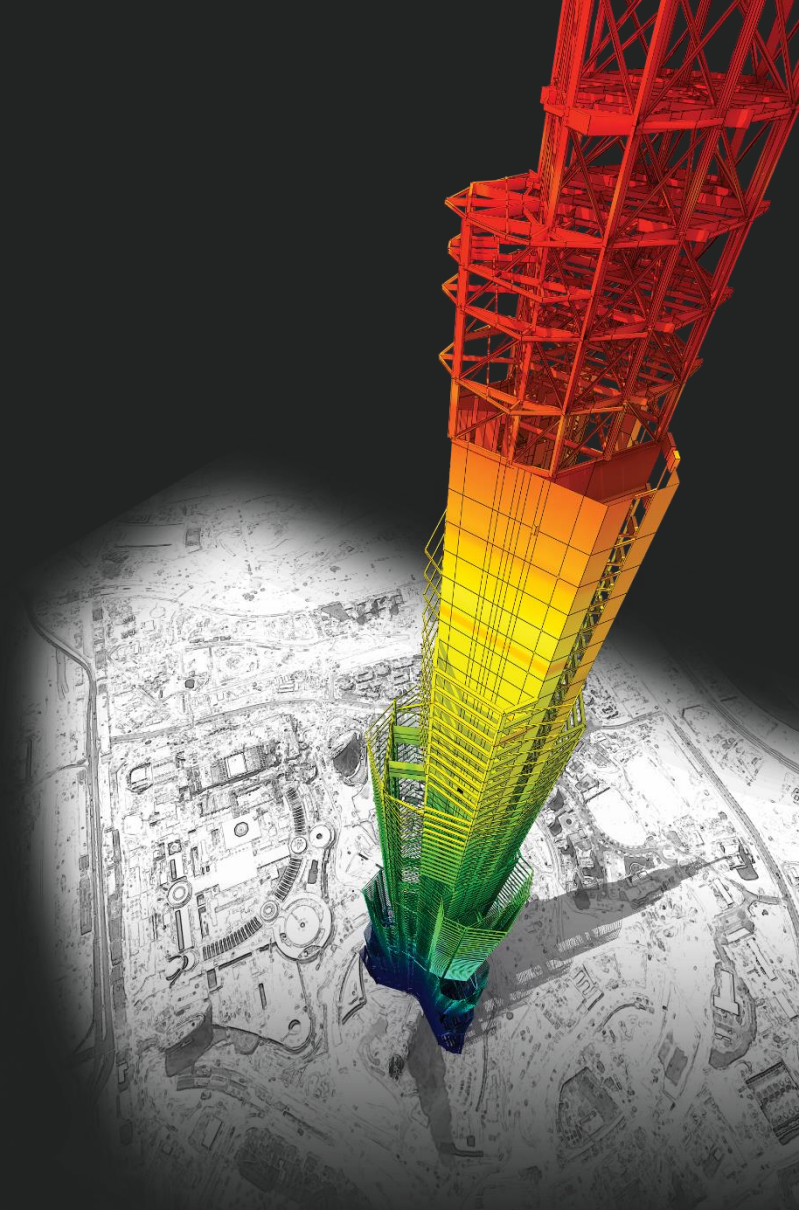
問題



建立樓板得時候，有兩個 Error。

1. Unable to add/modify the element. The geometry of the element no. 282 is incorrect.
2. The Number of divisions in each direction do not match.

Unable to add/modify the element. The geometry of the element no. 282 is incorrect.

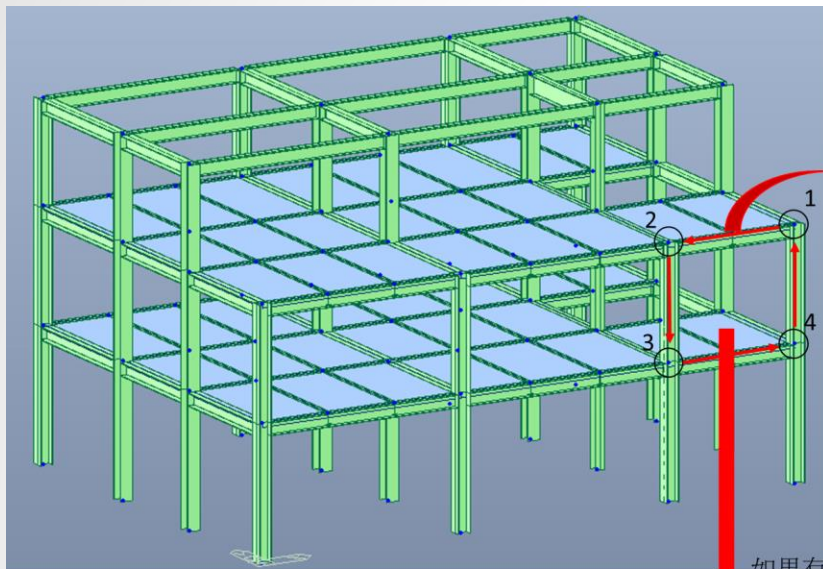


DESIGN OF General Structures

Integrated Design System for Building and General Structures

第一個問題

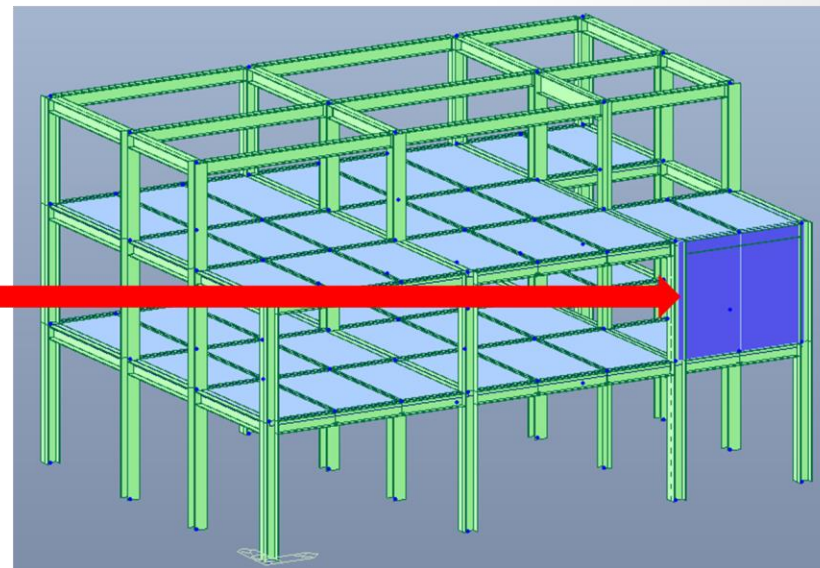
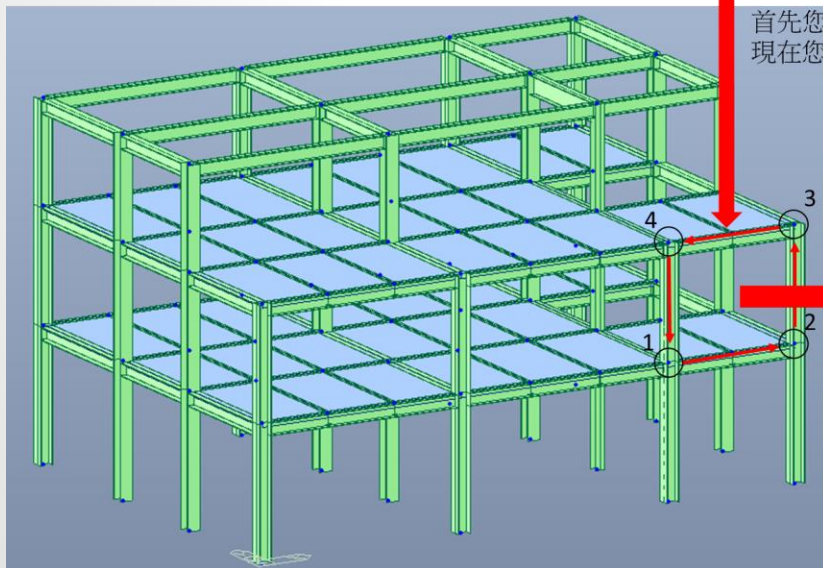
您應該改變 Nodal Connectivity。



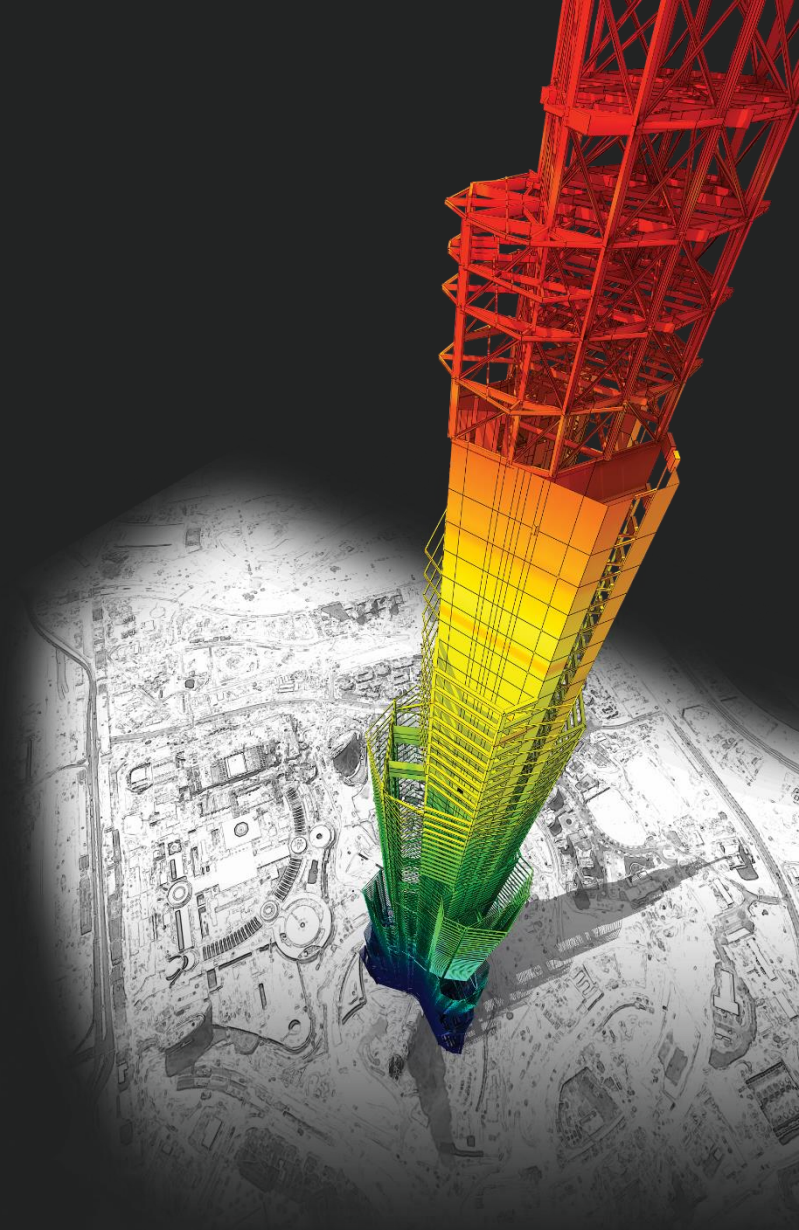
有 Error :
Unable to add/modify the element. The geometry
of the element no. 282 is incorrect.

如果有這樣的 Error，您應該改變 Nodal
Connectivity。

首先您的 Nodal Connectivity = 119, 117, 14, 4。
現在您輸入 Nodal Connectivity = 14, 4, 117, 119。



The Number of divisions in each direction do not match.

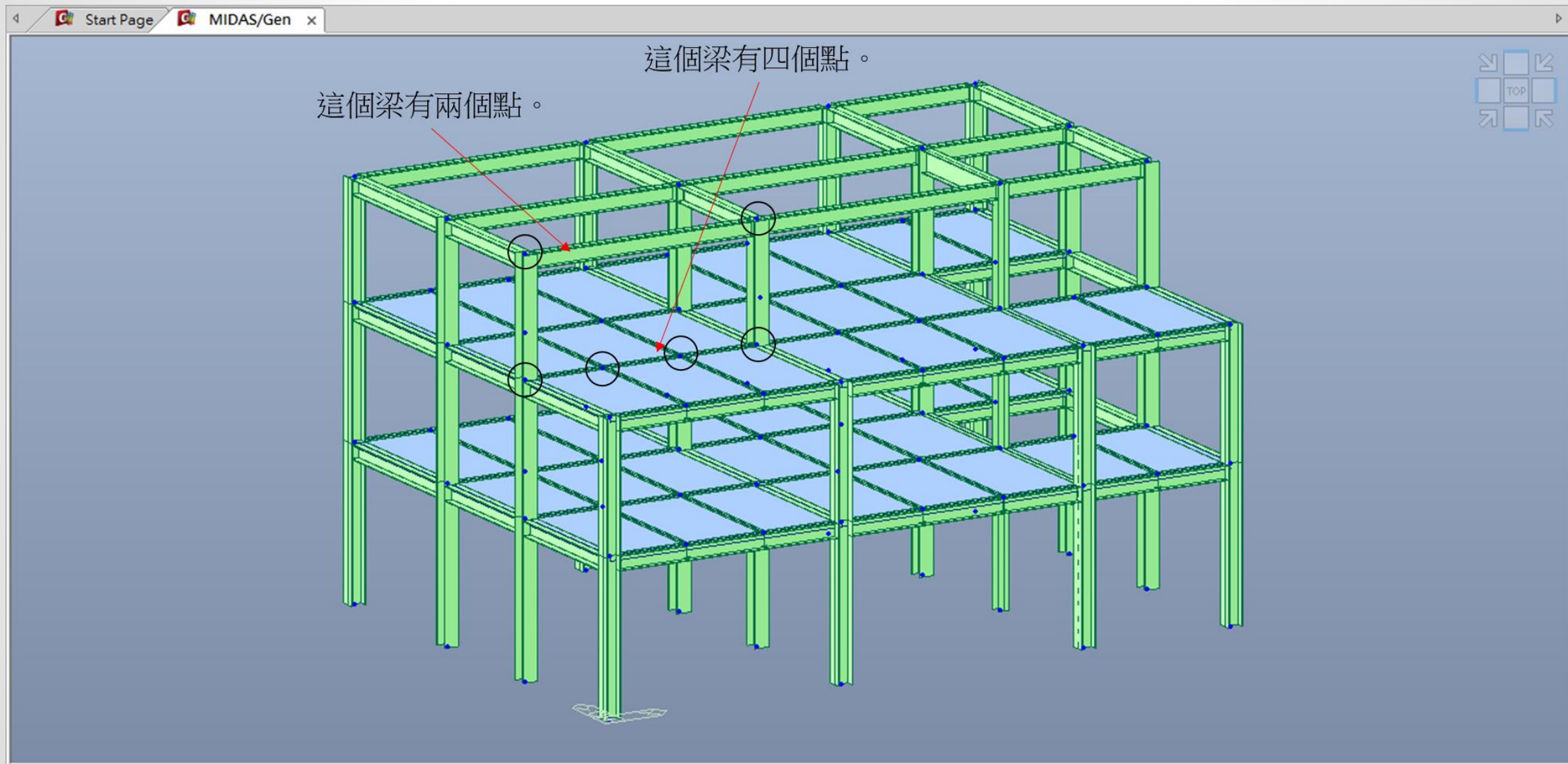


DESIGN OF General Structures

Integrated Design System for Building and General Structures

第二個問題

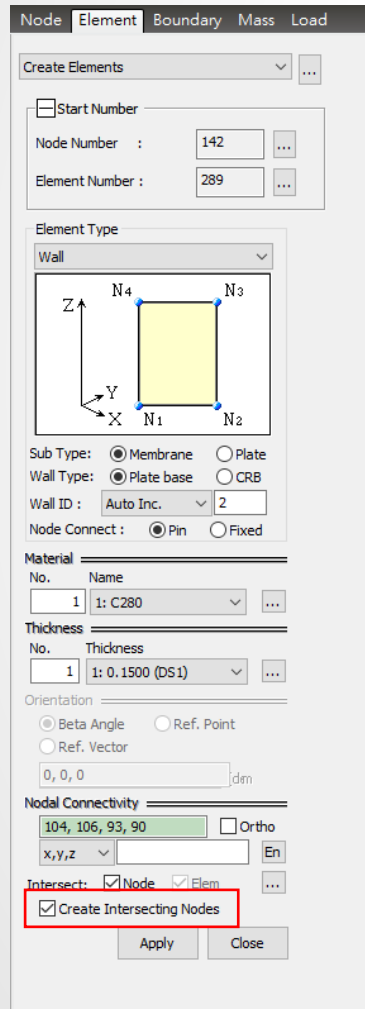
這個問題因為上面的梁跟下面的梁有不一樣的 Nodes。



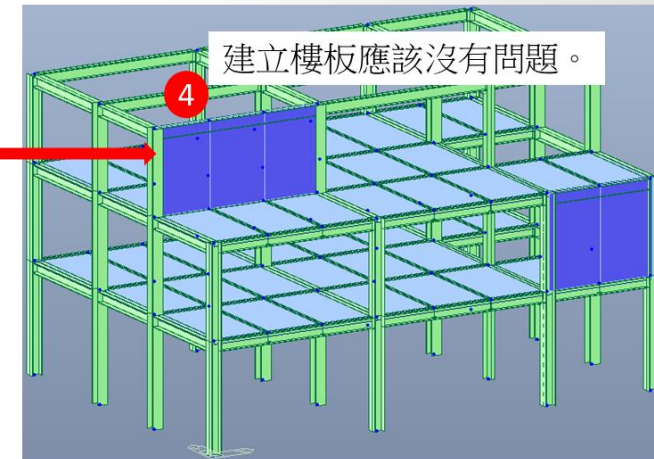
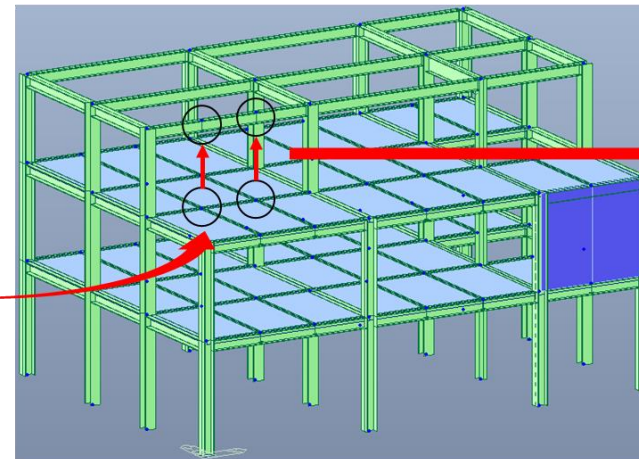
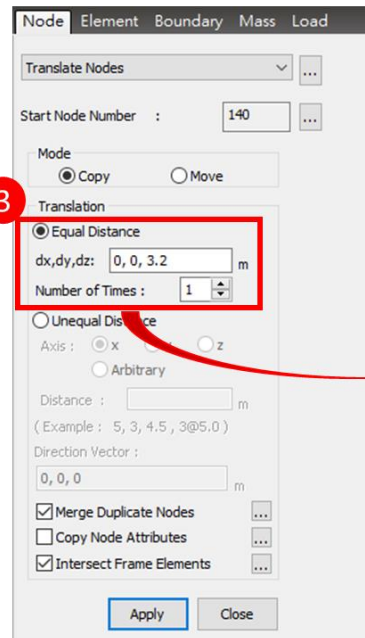
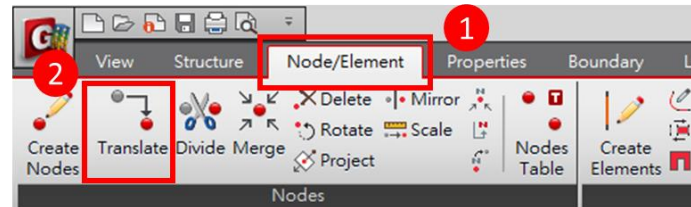
第二個問題

解決這個問題有兩個方法。

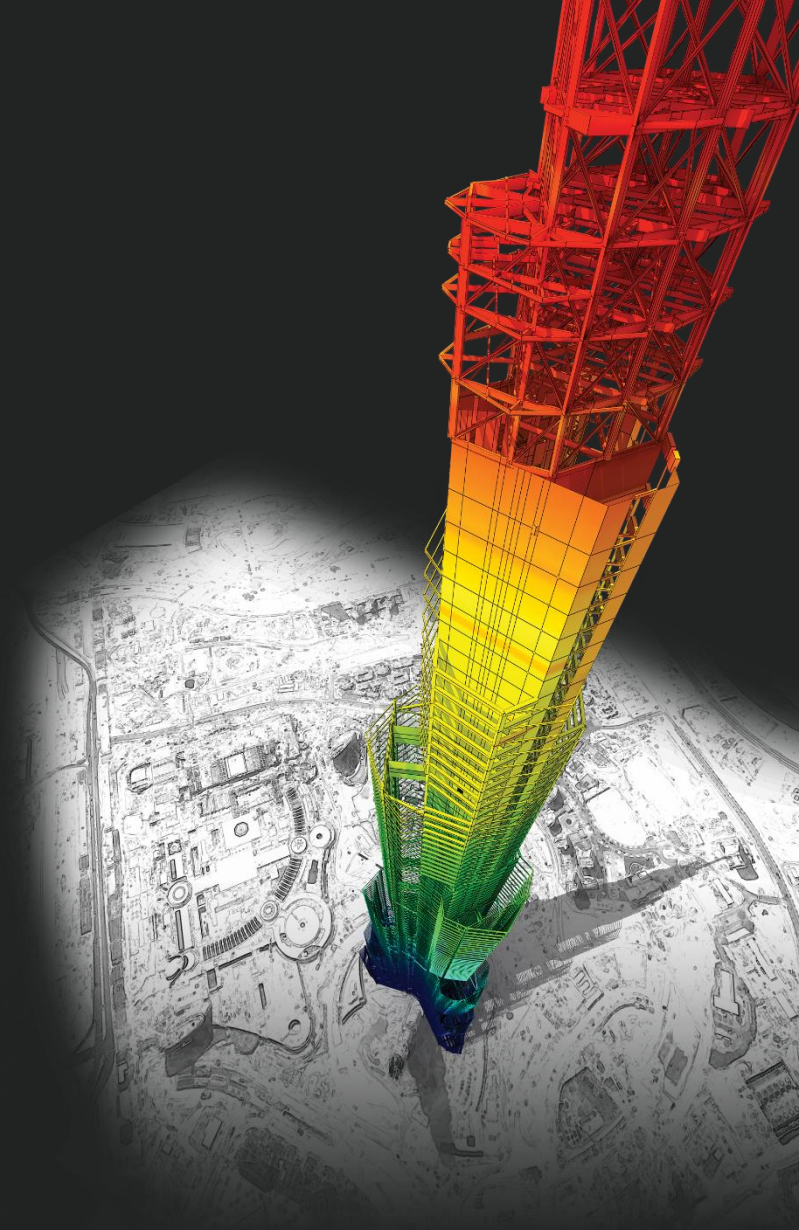
1. 建立樓板得時候，您可以勾選 Create Intersecting Nodes。



2. 如果用第一個方法還不能建立樓板，那你應該 Copy 那兩個 Nodes 然後建立樓板。



Thank You



DESIGN OF General Structures

Integrated Design System for Building and General Structures