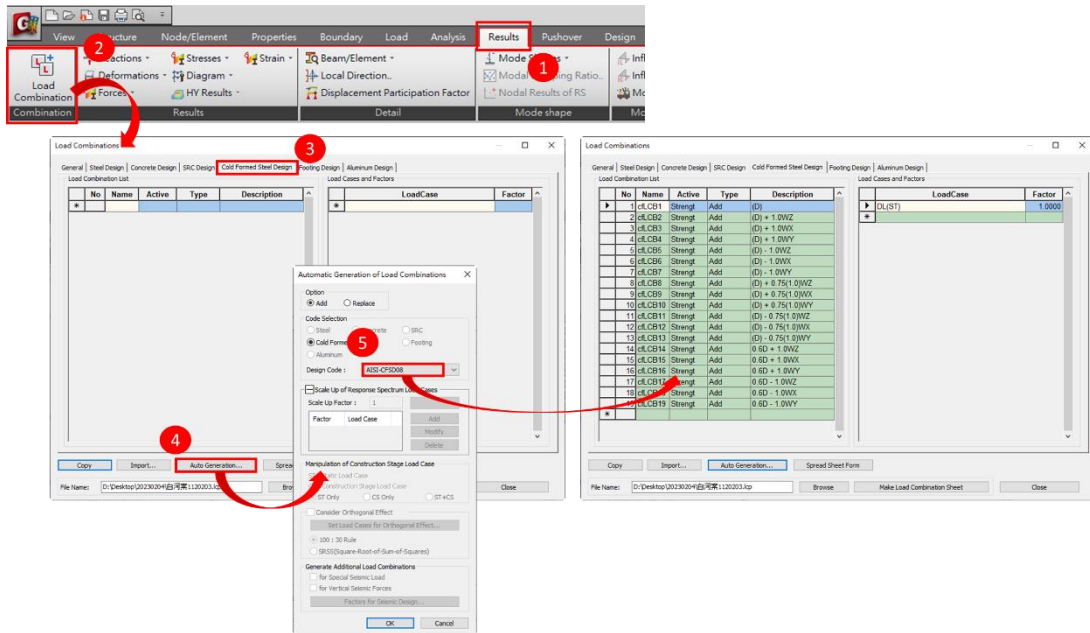




如果我有 Cold Formed Steel 斷面, 如何我做 Cold Formed Steel Section Design?



在 midas Gen, 一般鋼構斷面跟 Cold Formed Steel 斷面是不一樣的斷面。所以不能用 Steel Code Check 做 Cold Formed Steel Design。首先在 Result > Load Combination > 選 Cold Formed Steel Design > 輸入 Load Combination。



輸入 Load Combination 以後, 在 Design > Design > Cold Formed Steel Design > 按 Cold Formed Steel Code Check。

