



MIDAS

MESH FREE

線性-組合件
EX3.懸掛裝置

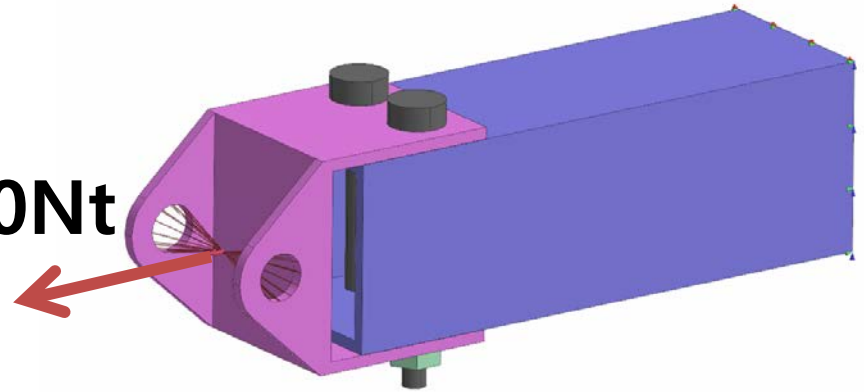
Simple, but Everything.



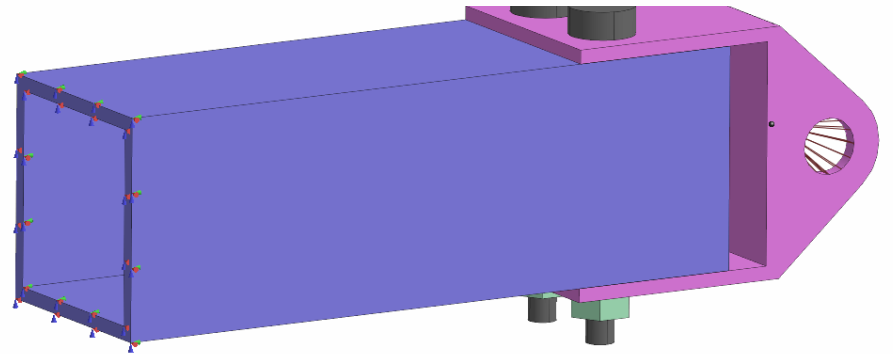
類型1:全部採用**焊接**接觸
 類型2:全部採用**滑動**接觸



$F_y = 1000Nt$



底面拘束
 X, Y, Z

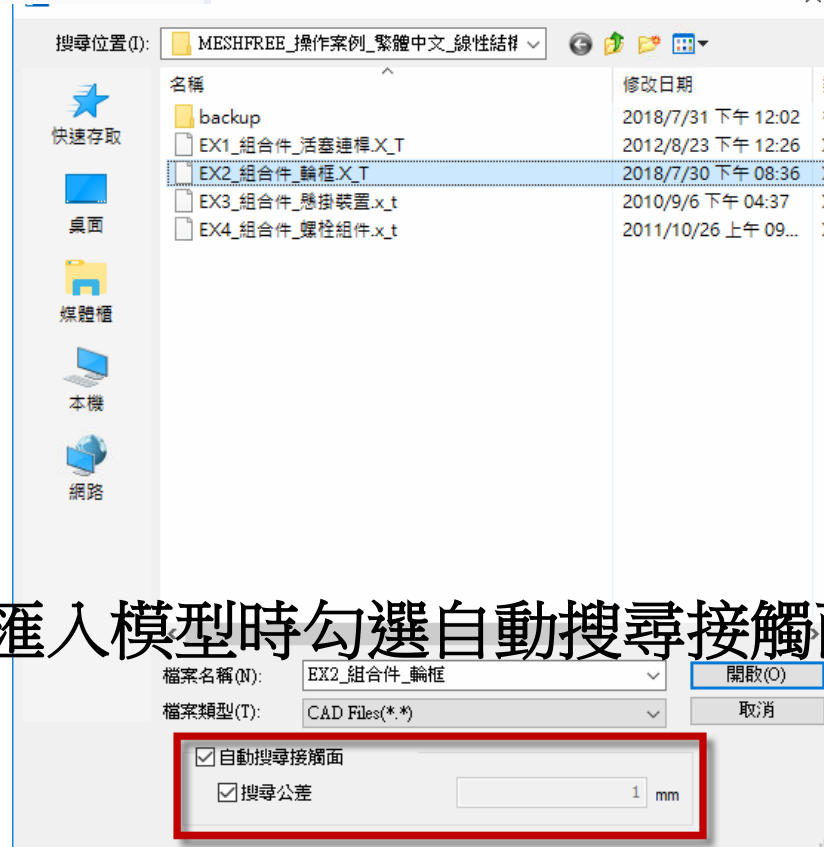


材料: Alloy Steel

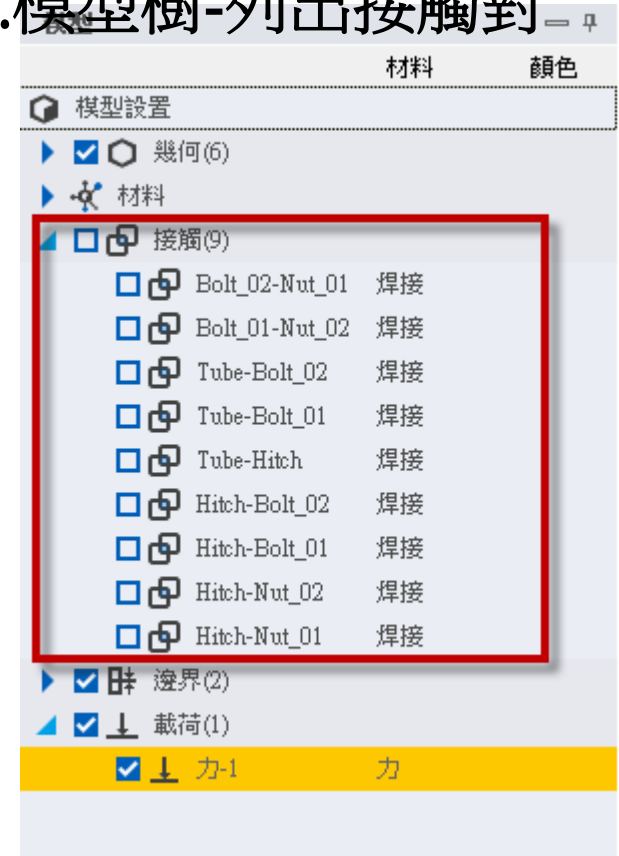
自動搜尋接觸面



Step2. 模型樹-列出接觸對



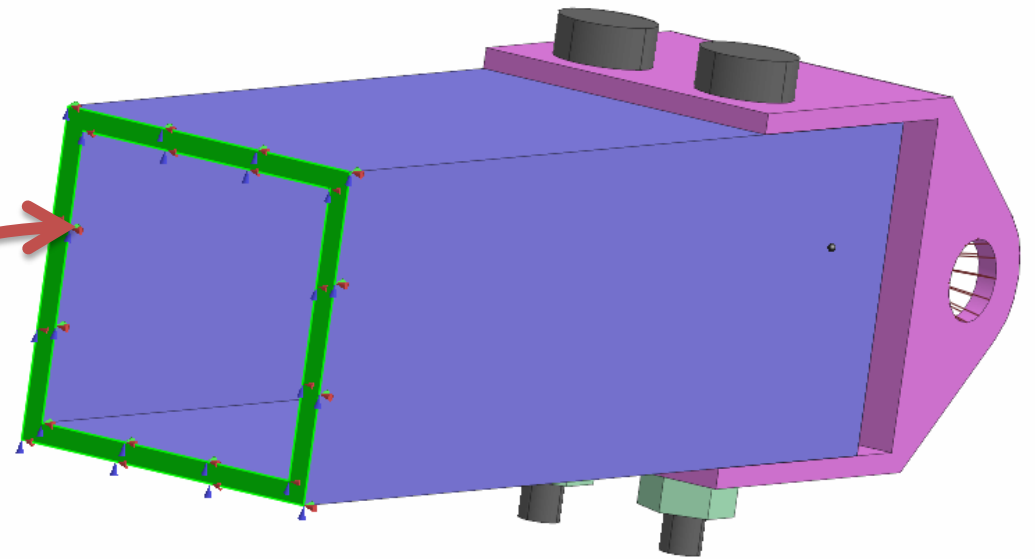
Step1. 匯入模型時勾選自動搜尋接觸面

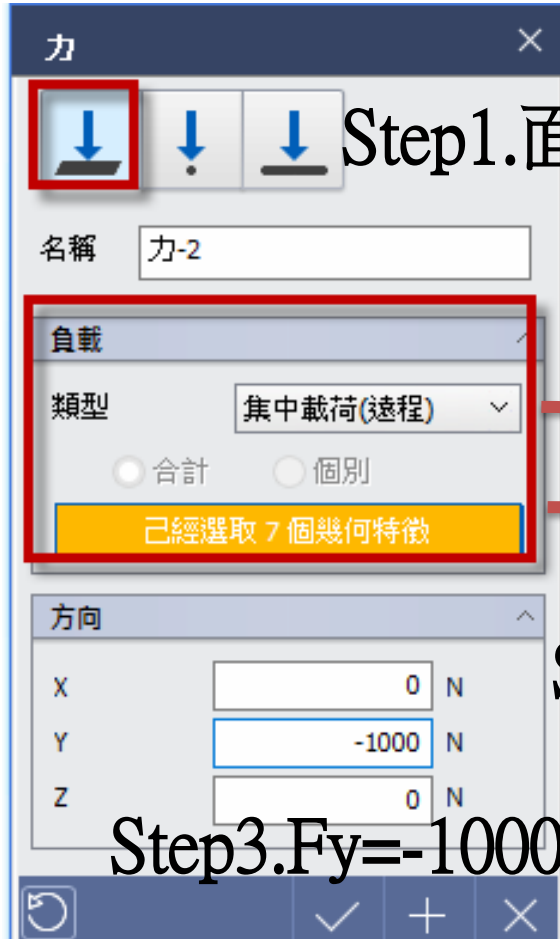


註:自動搜尋接觸面,預設為焊接接觸



選擇拘束底面

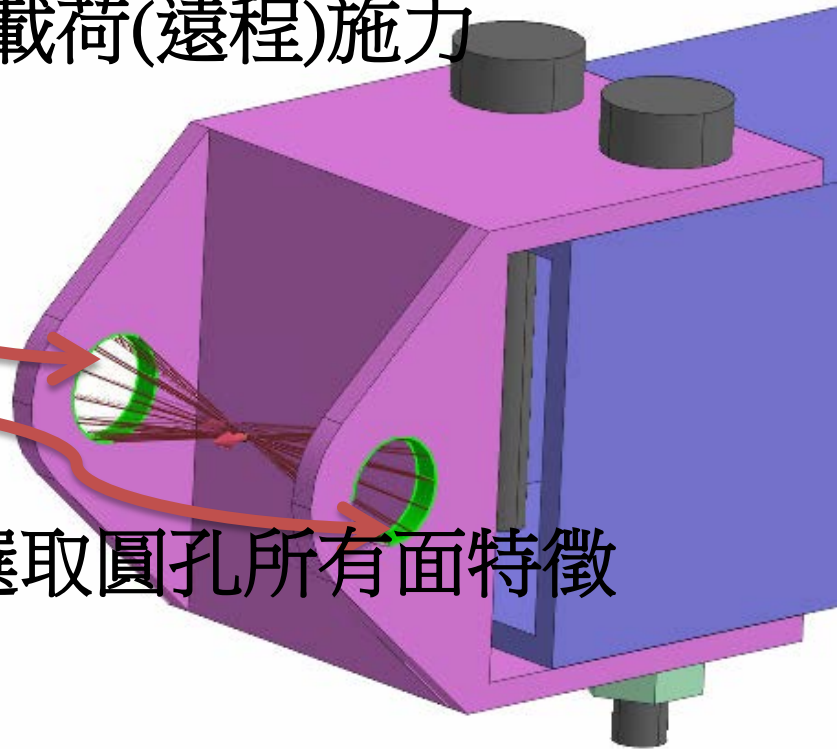




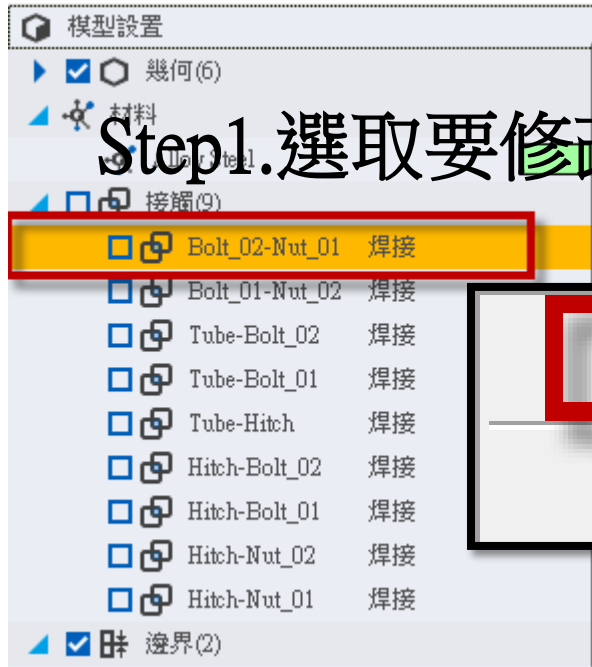
Step1.面-集中載荷(遠程)施力

Step2.選取圓孔所有面特徵

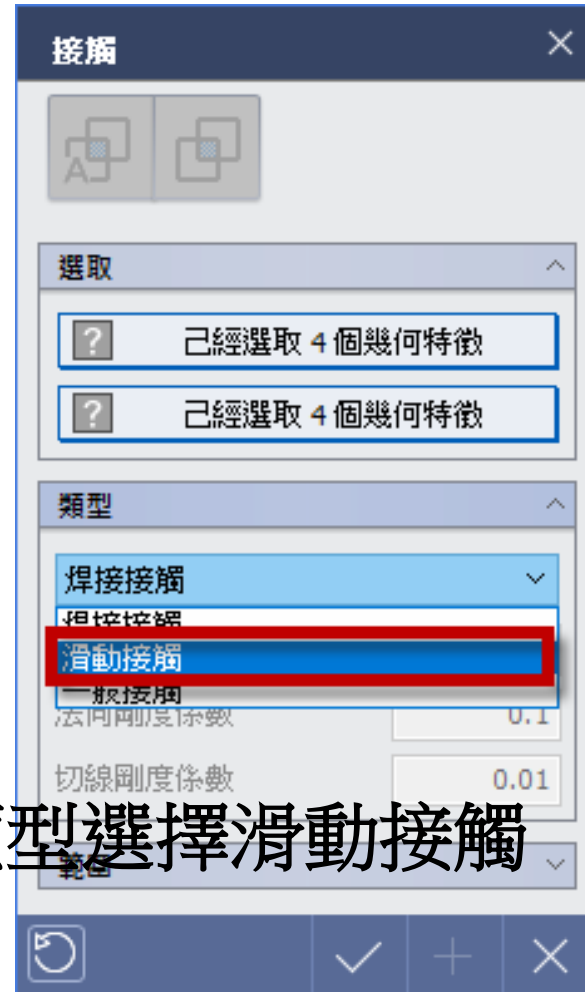
Step3. $F_y = -1000\text{N}$



接觸面特性修改



Step 1. 選取要修改接觸對, 按右鍵



Step 2. 類型選擇滑動接觸

註: 其它接觸對採相同方式更改接觸類型

執行分析



求解程序 [1/1]

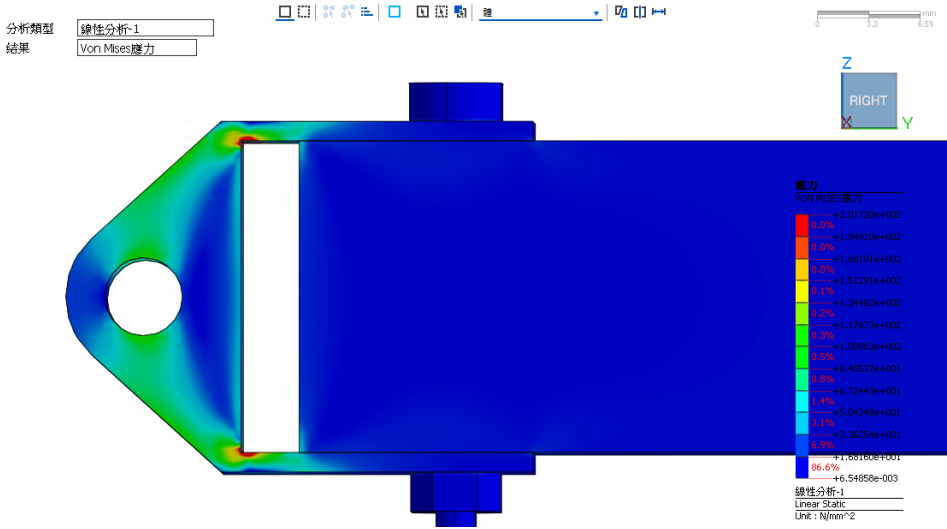
- 自動網點計算
- 網點創建
- 接觸搜索
- 設置
- 系統矩陣計算
- 求解
- 分析結果

取消

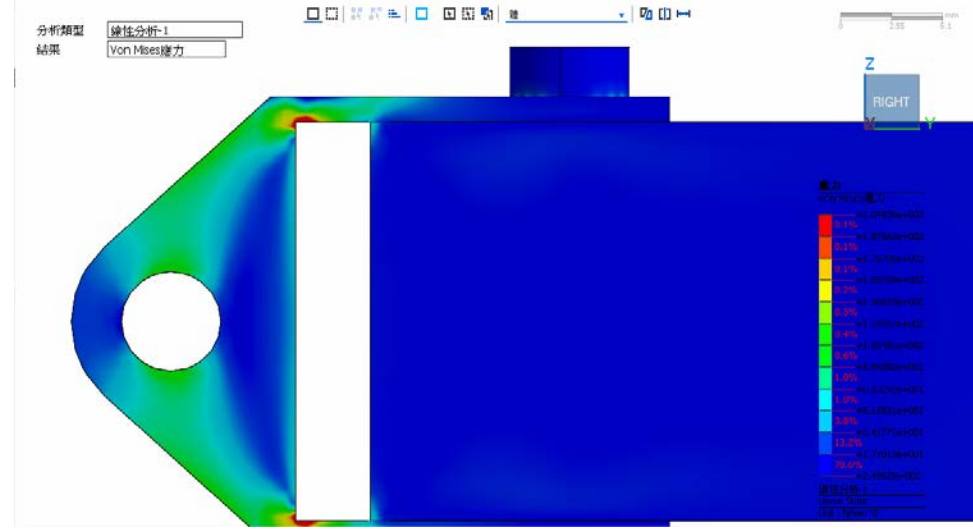
GENERATING BACKGROUND GRIDS WITH (NX, NY, NZ) = (28, 42, 31)

-20.5320, 1.9947, 54.2176

應力(MPa)

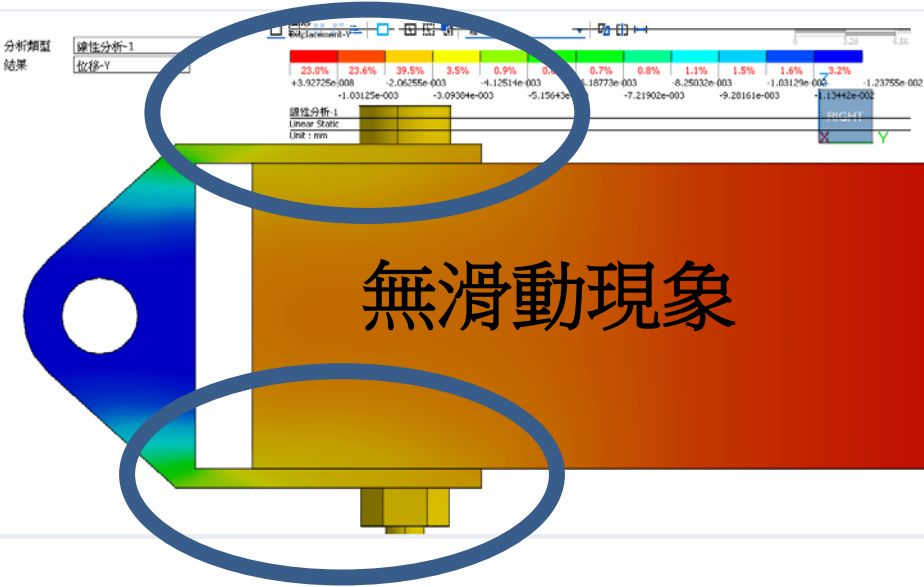


焊接接觸



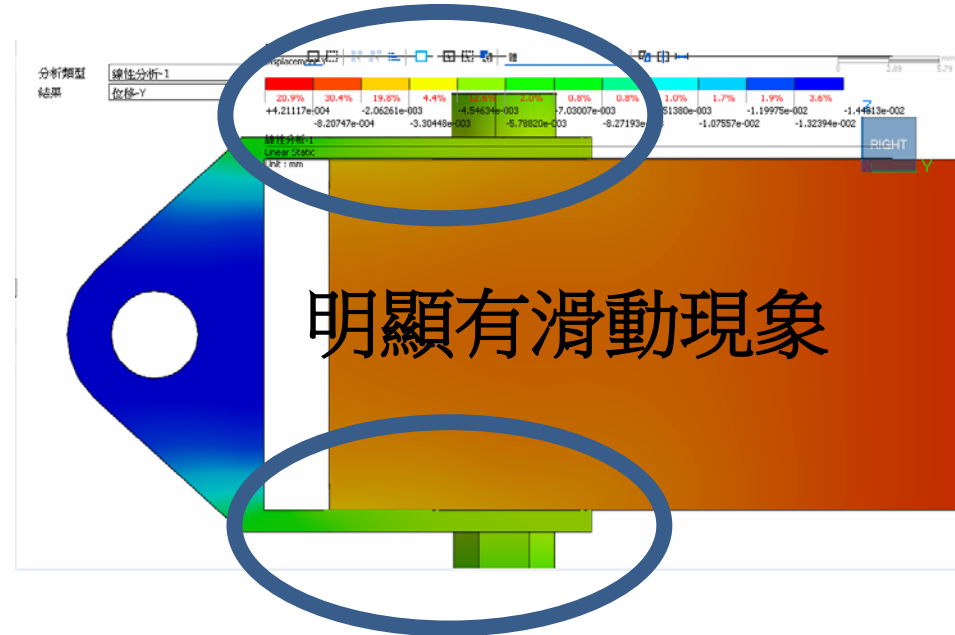
滑動接觸

Y方向-變形量(mm)



無滑動現象

焊接接觸



明顯有滑動現象

滑動接觸